




Join us in our wooded setting, 13 miles west of Eugene,  
near Veneta, Oregon, for an unforgettable adventure.  
Three magical days from 11:00 to 7:00. Get Social:     
Download as PDF: [OregonCountryFair.org/PeachPit](https://OregonCountryFair.org/PeachPit)



The Oregon Country Fair  
guide to entertainment  
and the Country Fair site





# Welcome Home Oregon Country Fair



The Oregon Country Fair welcomes you back after three years away from the beauty and magic of an in-person Fair. We had a glorious gathering in 2019 for our 50th Anniversary. This year will be different and smaller; however, it will be a dazzling and resplendent moment of triumph.

The last two years were an enormous departure from our tradition of gathering in the peace and shade of the Fair site to wander and celebrate along the Long Tom River. The work to produce two Virtual Fairs was immense and unexpected. We will be forever grateful to the long hours and excellent work done by staff and volunteers to bring the Fair in the Clouds to the public.

Nature has taken its toll on the Fair site during our absence. The Upper River Loop section on the Eight has sustained serious erosion and will not be passable this year. Many booths were in need of construction; however, the work has felt triumphant rather than morose. This is our moment to ascend from our solitude and embrace the joy of overcoming adversity. The Fair is Back, let's Dance!

-Sincerely, Oregon Country Fair Staff



## Craft Demonstrations

Every day from 11:00 to 7:00 at Black Oak Pocket Park (across from the Ritz Sauna) craft-making will be demonstrated. Creating space for artisans and chefs to sell their creations has always been a foundational tenet of the Fair. This year, we are highlighting the processes by which some of these arts and crafts are created. Have you ever wondered how they made that wonderful thing? Don't miss this opportunity to be inspired and educate yourself about what it takes to create some of the art you so admire.

## Fair Roots

*Leading the Way*, a new display, gives a brief overview of the social and political issues of the 60s that the Fair grew from and highlights areas of the Fair still reflecting these ideals. Also, the first 50 years of the Fair's history is illustrated in timeline form for a better understanding of where we came from. These will be on display all weekend at the Elders' Still Living Room.

## Keeping it Green

To demonstrate our commitment to making an event built on sustainability and care for our planet, the Fair has identified reducing our carbon footprint as an important area where we can have an impact. Fair staff and volunteers are engaging in understanding our current carbon impacts to identify areas where we can make significant improvements. Xavanadu hosts a demonstration of composting toilets so we can see if this is a technology that will help meet the Fair's needs and goals. Reducing individual automobile trips to the Fair is one of the most obvious and clear ways to reducing carbon emissions. Thank you to everyone who bicycled, carpooled or took the bus to the Fair!



## History Booth: OCF's Heritage & Humble Roots

Colorful plaques around the Fair will honor our fabulous crafters and food purveyors who have been participating in our event for 40 years or more by telling their stories in words and pictures.

Wander over and reminisce at the History Booth's Poster Gallery on Wally's Way! For over 50 years, talented artists have designed OCF poster artwork, each uniquely interpreting the Fair. The 2022 poster design by artist and illustrator Emily Poole features a black bear wading into the Long Tom River—possibly coming out of hibernation like the rest of us? Emily creates images with the goal of inspiring and educating about the natural world and what we can do to be better stewards of the land. Visit the Poster Gallery, near the bus entrance, and take home a poster from Commemorative Sales just across the way! Want to be part of our Great Wall of Fairies? Stop in to have your photo taken with your favorite poster, or perhaps your first Fair?!





# Just The Fair Essentials...

## How to Get Here

Tickets are available at [www.ticketwest.com](http://www.ticketwest.com), or call 1-800-992-8499. Cost is \$40/advance and \$50/Day-Of for Friday, \$40/advance and \$50/Day-Of for Saturday, and \$35/advance and \$50/Day-Of for Sunday. NO tickets are available on the Fair Site. Tickets for children under 12 are free, seniors (65 and over) and Alter-Abled are \$5 off.

## Shuttle Bus Service

Ride the bus! You don't need a bus ticket; your Fair pass gets you on any LTD bus for free. That includes fast and frequent shuttle service from Valley River Center and the downtown LTD station. The LAST BUS LEAVES THE FAIR SITE AT 7:30! LTD schedules are available at [www.ltd.org](http://www.ltd.org) or by calling (541) 687-5555.

## Bag Check

You can find the WOW Hall Bag Check in booth #297 in the Main Stage Meadow.

## Camping

For neighborhood camping information and tickets visit [oregoncountryfair.org](http://oregoncountryfair.org). There is NO PUBLIC CAMPING ON THE FAIR SITE. To find out "Where to Stay", visit <https://www.oregoncountryfair.org/about-ocf/general-information/where-to-stay/>.



© Peter Raducha

## Safety At the Fair

The Oregon Country Fair takes the health and safety of its Fair Family seriously. We have chosen to hold our in-person event this year with a safety protocol that is in accordance with federal, state, and local public health regulations. It is possible that these agencies may change regulations at any time and impact event aspects such as capacity or requiring attendees to wear face coverings. If any ticket holder does not comply with any laws, mandates, health orders or directives, or event terms, conditions, or rules, then the Oregon Country Fair may refuse admission to the event or require the ticket holder to leave the venue and such ticket holder will not be entitled to a refund.

### Our Safety Plan

OCF will require all public attendees to provide proof of full COVID-19 vaccination, as defined by the CDC, with the option for a religious or medical exemption, in compliance with the ADA regulations, in the form of a negative PCR COVID-19 test administered by a licensed test provider, laboratory, or health care provider, 24 hours prior to the date of entry. Per CDC guidelines, children under five years old are not required to be vaccinated.

Please visit our website for our full Safety Plan: <https://www.oregoncountryfair.org/ocf-2022-public-vaccination-policy/>



© Lane Weinberg

## BIPOC Sanctuary

Come stop by the BIPOC Sanctuary, a revelatory art installation located next to Rainbow Connection. You'll hear BIPOC stories reflecting on the experience of being in a white-controlled alternative community space, including themes of grief, love + rage, erasure, and what's missing within the space. Experience opportunities for interactive participation and co-conspiratorship along with receiving a call to action.



© Aaron Blake

## Rainbow Village & Rainbow Connection

**Rainbow Village:** Located in Community Village, within the Peace and Justice Booth, Rainbow Village will be returning to hold space for queer and trans folks at the Fair. This year, Rainbow Village will be totally trans-led and focused on our simple mission of facilitating a space for community care.

Our physical (and emotional) space within the booth offers queer and trans folks, and their loved ones, a place to sit and rest in community. This can be a space to connect, commiserate, grieve, explore, honor, seek support or guidance, express, or simply rest from the stimulation and bustle of the Fair. Our volunteers will be present to field and facilitate that care and safety.

Rainbow Village is also a point of interaction for all Fair participants. Come engage with our interactive exhibits. You'll get to combine doing a little craft and engaging ideas around queerness, intersectionality, and inclusion at the Fair. We're also present to answer your questions and provide resources.

Our space is a collaboration with this community to care for each other, in tenderness and through broader advocacy.

Rainbow Village understands that Black, Indigenous, and other non-white queer and transgender people face disproportionate rates of violence and harm. We are deeply committed to antiracism, and to uplifting the work, voices, and leadership of BIPOC.

**The Rainbow Connection:** After seven years of hard work and advocacy, welcome to the first year of the LGBTQIA+ affinity space

THIS year the space is created to hold community input to co-curate the sanctuary moving forward. We believe culture change comes from our collective voices letting those in power know what we need to be safe and cared for. Please come lend yours!

Located in Xavanadu, we are an affinity space ONLY for LGBTQIA+ folx to:

- Take a break from heterosexual and cisgender culture
- Create culture and rites of passage
- Just "be"
- Unabashedly express ourselves
- Celebrate the fluid and expansive universe of gender & sexuality
- Acknowledge the power of diversity within intersectional identities
- Grieve
- Activate
- Explore
- Honor our LGBTQIA+ elders and history
- Vision our future

We acknowledge this space is on the ancestral and unceded territory of the Kalapuya. We honor indigenous two-spirit beings and will not tolerate appropriation of two-spirit identities. We honor that LGBTQIA+ BIPOC are impacted by violence and oppression disproportionately, and we will center these voices when present.

Let this be a space to rejuvenate, activate, and collectively create the change we want to see at the Oregon Country Fair. We are looking for LGBTQIA+ folx to steward the space, and allies to staff the table outside. Contact [ocf.rainbow.connection@gmail.com](mailto:ocf.rainbow.connection@gmail.com) to get involved or ask questions!



© Benjamin Ammon



# Oh, the places You'll Go!...

## Chela Mela Meadow: The Fair's Inner Child

Chela Mela invites you to come play, chill, and dance. Behind the scenes, our crew has handed many wands off to up and coming organizers; we are excited to welcome you. Enjoy some lounge time in the Cuckoo's nest. Learn to juggle at the Yes You Canopy; we supply the toys. For young ones with a creative streak—stop by Five Fingers of Fun for an original craft project. Want a parade? Check out Dragon's Lair. Join in before 1:45. You can get painted and ready to parade through the path with Peachi the Dragon and her drummers. Looking for something quieter? The Dharma Garden offers a peaceful retreat under a giant tree by the side of the river. Join in the yoga classes at 12:00, 2:00 and 4:00. The Mighty Tiny Puppet Theater presents traditional and original stories with a range of styles. Kids and adults gather under the red, yellow and black tent to experience live puppetry on the Fair's tiniest stage.

Twice a day, at the Morningwood Odditorium, Fremont Players present a tale of wealth, wardrobe, imagination, and deceit! The Empress is an Imperial fashionista. She dresses to impress. Her Empire's future depends on dazzling everyone at the upcoming World Fashion Summit. Are the Empress' New Clothes made from impossibly innovative fabric? Perhaps they are too good to be true! All will be revealed in this family-friendly original retelling of a classic Hans Christian Andersen tale. This is panto—cheering, booing, shouting warnings to the Players—all welcome. Music written and performed by the Fremont Philharmonic Orchestra.

## Still Living Room: Pull Up a (Rocking) Chair [H5]

The Still Living Room is located on Strawberry Lane by Jill's Crossing. Take a break and stroll through the historical timelines depicting the issues and growth that have faced the OCF community. Our memorial wall is our personal remembrances of Fair family who have moved on to new adventures. You're invited to bring an 8x10" photo in a black frame, with the name, dates and short story of your OCF loved one.

## Youth Crafts Booth: Creativity Incubator [K5]

The Youth Booth is celebrating its 23rd anniversary! The Youth Booth was founded by youth artists and was made an official Fair craft booth in 1999. It is located at L-78, is still run by some of its founding members, and proudly features the work of today's young artists. It is often the first place Fair youth can show and sell their talents and wares. Many have gone on to become adult artisans, making a living with their crafts. So come out and support our youth and our future by visiting and supporting the Youth Booth!

## Altared Space: Spiritual Pit Stop [E7]

For this year, Altared Space is simplifying its offering as we hold space for the truths we have all been through these last three years. Come take a moment to connect with the beautiful Altar, to sit with the wise Elementals, and to contemplate in the wooded Meditation Area. A special Altared Space Prayer Book is being created for you to write your prayers, hopes, and dreams. Donations offered to Altared Space go to support scholarships for the OCF's Culture Jam Youth Camp. Visit us at this sacred spot on Strawberry Lane near Shady Grove.



© Jeremy Running

## Choosing Consent

The Fair is working to be a space that is free of oppression and coercion, where people feel free to be their most authentic selves. This becomes possible through cultivating a culture of consent, where the whole community comes together to create a space where each individual is heard, valued, and safe. We hope that you will be part of creating this space through listening to others and respecting their boundaries, reaching out when something does not seem right, and continually being open to learning from others' perspectives.

Each and every person is part of the solution. This is a paradigm shift from how the default world has operated and by opening our hearts and minds we can hold our community to a higher standard. If you have been a victim of unwanted contact or have witnessed this behavior, please seek help from White Bird who can be reached by telephone from any info booth. Please hold each other in loving respect.



© Hannah Miller

## ...More Fair Essentials...

### Child Care

We are dedicated to bringing the magic of Fair to the youngest among us! We are not supervising child care areas or admitting children into our care this year. Instead, you'll find a wide range of enriching and interactive exhibits and activities for kids of all ages. Find us on Wally's Way at the front of Fair near the Bus Admissions entrance and Caravan Stage, where families will enjoy a kid's wonderland, including family-friendly entertainment, our enchanted castle playground, a free library (bring a book, take a book!), and many more hands-on crafting, learning, and imaginative play areas. Child Care Crew is also pleased to provide several fully staffed "Mellow Spaces" throughout Fair: shady, comfortable rest areas where families with small children can get off the path, relax, and recharge. You can find Mellow Spaces on Sesame Street (at the top of the Eight across from Ritz Sauna), on Wally's Way (between the New Kids Info Booth and the Caravan Stage), and now in the former WorkIt Shop near the Dance Pavilion in Xavanadu.

### Alter Abled Access & Advocacy

Alter Abled Access and Advocacy (4A) promotes equal access for all participants at OCF. 4A provides some equipment loans, sign language interpreters and other assistance, as well as advocacy, education and advice. 4A is located in the Dragon's Head at the entrance and also in Community Village.



© Benjamin Ammon

### Recycling

The Recycling Crew, working with the Fair food artisans, is doing everything we can to eliminate plastic from the Fair. All of the food service ware throughout the Fair, including beverage cups, is compostable! Please dispose of all compostable service ware in the green compost receptacles, not the red landfill receptacles. All utensils you receive will go in the utensil buckets located at each kiosk in the Fair. You will find collection kiosks throughout the event, often run by costumed Recyclers who will happily answer your questions. If you're not sure what goes where, ask a Recycler!

We on the Recycling Crew are dedicated to composting everything we can and minimizing the impact that our event has on our land and the planet. To learn more about what we do, please visit the educational recycling kiosk in Energy Park. You might also enjoy our presence at the StewardShip booth in Xavanadu. Our success depends on you – thank you for recycling responsibly.



# ...and Go ...and Go!...

## The Ritz: Not Your Typical Hot Spot [A4]

Welcome to the Ritz Sauna & Showers, booth #W34, located on Sesame Street, just down the path from Main Stage.

For 44 years, the Ritz has provided OCF Fairgoers with a unique bathing experience. We offer open air, public and private showers, two large saunas, live music, multiple drying fires and reservation-only, deluxe tub rooms. It's all in a dynamic, art-filled, spa environment that rejuvenates the mind and body. The Ritz is alter-able accessible. We host a Women's Hour, Friday 4:00 - 5:30. Additional services include a staffed valuable check, concessions and towel rentals.

Look for the return of the Mushroom, in front of the Ritz this Fair. It's a magical spot to meet up with friends, and kids of all ages love to play around it. We are excited for its return after several years of dormancy.

## Energy Park: Finding Solutions [F4]

Energy Park demonstrates alternatives that we can use to reduce our carbon footprint. We let the sun guide our way, using solar power to heat water for showers and provide electricity for the fabulous sound emanating from Kesey Stage. This year our solar powered cell phone charging station is moving back into Energy Park. Come in and use some of our collected sunlight to keep your communications going.

And while you wait for that to happen, look around Energy Park. You can find people here who are experts in the fields of renewable energy, organic farming, and resource-mindful living. Many non-profits, businesses and advocacy groups set up educational exhibits and demonstrations that show some of the



alternative energy solutions possible today. Explore Energy Park's kid-friendly demonstrations about solar power, wind energy, hydro power technologies and more. Discover our greenest zone, Ag Alley, to see showcases of heirloom vegetables and flowers, along with a look at the future of small farms. All in all, Energy Park is a place to find all kinds of solutions.

## Imagerium Portrait Studio: Free Unselfies [I3]

Your Fair Photography Team is thrilled to put our hearts and souls into capturing the visual magic that is the Oregon Country Fair each and every year. Photographing the people, performances, costumes, booths, workers, setting and decorations is an annual highlight for us as a team. We do our best to document and capture the beauty and magic of OCF to memorialize each year for generations to come.

Our Imagerium Photography Studio Booth is located next to Commemorative Sales and across from The Rabbit Hole just beyond Bus Admissions. This portrait studio provides all Fairgoers a chance to have professional quality portraits taken of themselves and their group during their visit, free of charge. Fair attendees will be able to access their photos from their computer or other device. You will be able to download your free professional portrait at: <https://ocf.smugmug.com/>. We trust this will allow people to increase their connection to the Fair, allowing them to always remember their time with us.

While you're there, please take a minute or two to meet your official Fair Photography Team and start making this year's memories!



# ...More Fair Essentials...

## Medical & Crisis Assistance

It's 2022 and White Bird's Rock Medicine crew is returning to OCF to provide its unique brand of medical and crisis intervention services once again! It's been more than a minute since we gathered together, and we want to remind you that White Bird is the emergency response at the Fair and dispatches trained medical & mental health professionals to incidents anywhere on site as needed. We embrace a Harm Reduction approach to care and all services are free & confidential.

Don't call 911 (seriously – please don't), call White Bird! We can be contacted by any staff person carrying a radio or via OCF's internal telephone system (Tinker Bell) located at most major Fair Installations like stages, gates, and Info Booths. We make house calls!

White Bird's traditional home, Big Bird, Booth #243, located next to the Main Stage Meadow will be open 24hrs/day beginning 8:00am Wednesday, July 6th and will close 8:00am Monday, July 11th. In 2019, our second Medical Station, Little Wing (like the Jimi

Hendrix song), located in Xavanadu, near Wind Gate at the other end of the Fair, became a full service station, duplicating everything we provide at Big Bird! Little Wing will be open beginning 8:00am Thursday, July 7th and will run 24/7 all weekend until 4:00pm Monday afternoon, July 12th.

We want to remind you that our Covid-19 situation is fluid and ever changing. Even though it may appear safer, that is not the same as 100% safe. The pandemic is not over, and we are gathering together to celebrate our large OCF community, sometimes in close quarters. Wash your hands! Wear a mask in crowded settings! Be aware and informed of your risk and the risk of those around you! Take Care Of Each Other!

Basic First Aid supplies are also available at all Info Booths. A.E.D.'s are distributed throughout the event site (see the Map).

Have fun, be excellent to each other, and welcome back!





# ...and Keep on Going!

© Jeremy Running



© Wood & Smith



© Lane Weinberg



## Community Village: A Fair Within A Fair [E5]

Located between Energy Park and Main Stage, Community Village is dedicated to education, information access and networking for progressive social change through art, music and social action. We work to create a Village Vision of love, peace, trust, justice, cooperation, equality and social service, by believing in dreams, thinking of others, valuing differences and experimenting with new ideas. We hope to expand our consciousness, growing beyond the Fair... into the world at large. Come gaze into the future, see the peaches of our past, and stand up for a new Day of Change. Remember, Om Circle at 10:30 on Sunday morning, wherever you are.



© Quentin Furrow

## Archaeology Park: Super Old School-ing [B8]

Join us at Ark Park and step back in time along the banks of the Long Tom River. Regional archaeological studies during the 1980s found more than 10,500 years of cultural history on the grounds of the Oregon Country Fair. At Ark Park's museum display you can talk to our archaeologist and learn more about the Fair's educational, research, and preservation efforts. Learn about the Kalapuya people, their history and the world they lived in then and today. The archaeological sites we care for are part of a larger system of sites along the river. Find out how the Kalapuyans managed their landscape and harvested its bounty. Check out the Ark Park buildings of hand-split cedar, built with traditional construction methods. Visit with true artisans as they show you flint knapping, fire making, hide tanning, and basketry. At the trade-booth, you can learn about ancient skill gatherings or purchase replicated artifacts and instructional books produced by our demonstrators. See the Ark Park schedule for workshop times or just stop by and learn something new about some very old skills.



© Jeremy Running

# ...Even More Essentials

## Smokin'

To allow smokers and non-smokers to live in harmony, we ask those who smoke or vape tobacco to smoke only in designated smoking areas. When you see the butt-cans, you will know you have found a smoking area.

Help us spread awareness by respecting each other, not smoking on the paths, not smoking in stage audiences and helping each other locate the nearest smoking area. There is absolutely no cannabis smoking or vaping allowed at the Fair.

Together we can all have a smokin' good time!

## Commemorative Sales

Commemorative Sales (or "Commie Sales" as we refer to ourselves) has all of your 2022 OCF merch! We will be carrying the usual staples with this year's beautiful poster artwork and some other fun graphics. Come shop for posters, crew neck t-shirts, tank tops, a limited number of sweatshirts and two different bandana designs. Commie Sales has three locations at the Fair: Left Bank History Booth, a spot right next to Odyssey across from the Rabbit Hole, and a beautiful booth next to Dance Pavilion at Xavanadu. Can't wait to see you there!

## Keep The Fair in Your Heart Year Round!

92.7 KOCF-FM Fern Ridge Community Radio is one way to keep the Fair a part of your everyday life! Streaming to the world online at [kocf.org](http://kocf.org), you can listen to the music you love while you're traipsing the trails of your life, 24 x 7 x 365. Blues, rock and roll, reggae and 60s psychedelic rock, new programs are created each week by a mind-blowing cadre of talented producers and volunteers.

KOCF would not happen without the incredible support of amazing volunteers throughout the Fair Family and the community. Thank you! In the spirit of the Fair philanthropy, KOCF also gives back to the community by working with the Fern Ridge schools to offer kids a new path to learning through audio and sound production. KOCF also broadcasts activities in the greater Fern Ridge area, enhancing and strengthening community ties and building civic engagement.

During the Fair, tune-in to KOCF 92.7 FM each evening and listen to the music recorded daily at the Hoarse Chorale, starting at 9:00pm. We will also be providing important announcements and updates about the Fair throughout the broadcast day.

Go to our Facebook page (92.7 Fern Ridge Community Radio) or our website ([KOCF.org](http://KOCF.org)) to learn more, read about volunteer opportunities, and most importantly listen to the music you love!

## General Store

Have your ears been needing new tunes? For more than 30 years, the General Store #297 has been a courtesy booth selling entertainers merchandise from the many stages. Conveniently located next to KLCC and Main Stage, you can find vinyl, CDs, t-shirts, and other fun gear from many Fair favorites. We also carry limited quantities of Oregon Country Fair Commemorative merchandise. Be sure to stop by and directly support the entertainers with your purchase!

## Potty Talk

The Oregon Country Fair celebrates diversity, it is our uniqueness that creates the beauty and magic that is the Fair experience! Familiarize yourselves with our new urinal terminology as well as the accompanying Haikus! Protect your nose and your health and wear a mask when using the potty.

### POINTERS

If you stand to pee  
This is the right place for you  
Gender inclusive

### SETTERS

If you squat to pee  
This is the right place for you  
Gender inclusive



# INDEX of Stage Performers & Programs

BROWSE CHRONOLOGICAL STAGE  
SCHEDULES ON PAGES 8–15



## MUSIC

A Side of Beets | Sat 2:00 Community Village  
Adam East & Kris Deelane | Fri 4:20 Blue Moon, Sat 1:40 Hoarse Chorale  
Alcyon Massive | Sun 4:20 Hoarse Chorale  
Alder Street | Fri 4:20 Hoarse Chorale, Sun 12:20 Hoarse Chorale  
Aruna Beth Miriam Rose & Friends | Fri 2:00 Community Village  
Ashleigh Flynn & The Riveters | Sat 3:00 Hoarse Chorale  
Banshee Tree | Fri 6:00 Morningwood, Sat 1:30 Morningwood, Sun 1:30 Morningwood  
Baroque Betty | Sun 3:15 Kesey Stage  
Beat Crunchers | Sat 12:45 Monkey Palace  
Bluphoria | Sat 6:00 Community Village  
Brett Sisun | Sat 5:00 Kesey Stage  
Brian Cutean | Sat 1:40 Blue Moon, Sun 1:40 Blue Moon  
Buckman Coe | Sun 6:00 Kesey Stage  
Caitlin Jemma | Fri 12:20 Hoarse Chorale, Sun 5:50 Blue Moon  
Candy Picnic | Fri 6:00 Community Village  
Cassandra Lewis | Fri 4:00 Kesey Stage  
Cassandra Robertson | Fri 12:00 Community Village  
De Solution | Fri 2:00 Monkey Palace, Sat 3:15 Monkey Palace  
DeVotchKa | Sun 4:00 Main Stage  
Emily Kokal | Fri 12:20 Blue Moon, Sat 3:00 Blue Moon  
Eostar & Mathais | Sun 12:00 Community Village  
Fortune's Folly | Fri 4:00 Youth Stage  
Fox and Bones | Sat 5:30 Youth Stage  
Free Creatures | Sat 5:50 Blue Moon  
Fremont Players and Philharmonic | Morningwood Fri 12:00 & 3:00, Sat 12:00 & 3:00, Sun 12:00 & 3:00  
Gabriel Wolfchild Band | Fri 6:00 Kesey Stage  
George Sadak | Fri 11:30 Caravan, Sat 11:30 Caravan, Sun 11:30 Caravan  
Glitterfox | Fri 1:30 Morningwood, Sat 4:20 Hoarse Chorale, Sun 6:00 Morningwood  
Graham Patzner | Sat 6:00 Kesey Stage  
Grupo Masato | Fri 6:00 Monkey Palace, Sat 4:30 Monkey Palace, Sun 3:15 Monkey Palace  
Halley Greg | Sat 4:00 Kesey Stage  
Handmade Moments | Sat 11:30 Main Stage, Sun 4:20 Blue Moon  
High Step Society | Sat 12:10 Main Stage  
Inian Moon | Sun 11:30 Youth Stage  
Invisible Arts Project | Sat 4:00 Community Village  
Jacobs-Strain & Worth | Sat 11:00 Kesey Stage  
Jim Page | Fri 11:00 Blue Moon, Sat 12:00 Community Village, Sun 12:20 Blue Moon  
Jugglemania | Fri 12:45 Monkey Palace, Sun 11:30 Monkey Palace  
Katie Sontag | Sun 12:00 Kesey Stage  
Kef | Sun 12:45 Monkey Palace  
Lewi Longmire & and L'Thirst Trap | Fri 3:00 Hoarse Chorale  
Linda Yapp the Lemon Drop Fairy | Fri 11:30 Youth Stage  
Llorona | Fri 11:30 Monkey Palace, Sat 6:00 Morningwood, Sun 4:30 Morningwood  
MarchFourth | Fri 5:45 Main Stage  
Max Ribner | Sun 11:30 Main Stage  
Michael Mowgli and Friends | Sun 5:00 Kesey Stage  
Michelle Alany and The Mystics | Sat 3:30 Caravan  
Miles Gracen | Sun 5:30 Youth Stage  
Moes Family Band | Sun 4:00 Youth Stage  
MonoNeon Band | Fri 4:05 Main Stage  
Moonalice | Fri 5:50 Hoarse Chorale, Sat 4:10 Main Stage  
Moorea Masa & The Mood | Fri 2:40 Main Stage, Sun 1:40 Hoarse Chorale  
OCF Singer/Songwriter Showcase | Fri 1:00 Kesey Stage, Sat 1:00 Kesey Stage  
OCF Songwriters-Songs of the Naked Soul | Sun 1:00 Kesey Stage  
Olivia de La Cruz | Fri 3:15 Kesey Stage  
Outer Orbit | Sun 1:00 Main Stage  
Percy Hilo, David Rogers, Omo & Jair | Sun 2:00 Community Village  
Ras Gabriel and Joe Ginet' | Fri 5:30 Youth Stage  
Reb & The Good News | Fri 5:00 Kesey Stage  
Rizo | Fri 1:20 Main Stage, Sun 3:00 Hoarse Chorale  
Rob Tobias | Fri 12:00 Kesey Stage  
Robin Jackson and the Caravan | Fri 4:30 Monkey Palace, Sun 2:00 Monkey Palace  
Ron Artis II | Sat 2:40 Main Stage, Sat 5:50 Hoarse Chorale  
Russ Liquid | Sat 1:20 Main Stage  
SageCrow The Flock | Fri 3:15 Monkey Palace, Sat 6:00 Monkey Palace  
Saloon Ensemble | Sat 2:00 Monkey Palace, Sun 4:30 Monkey Palace  
Sara B3 & 45 RPM Soul Revue | Fri 5:50 Blue Moon  
Sávila | Fri 1:40 Hoarse Chorale, Sat 4:20 Blue Moon  
Scott Law | Sat 12:20 Blue Moon  
Solovox | Sat 11:30 Monkey Palace, Sun 6:00 Monkey Palace  
Space Neighbors | Sat 12:00 Kesey Stage  
Sweet N' Juicy | Sat 12:20 Hoarse Chorale, Sun 3:00 Blue Moon  
Tara Velarde & The Good Time Kids | Fri 4:00 Community Village  
The California Honeydrops | Sat 5:45 Main Stage, Sun 5:50 Hoarse Chorale  
The Chris Chandler Show | Fri 1:40 Blue Moon, Sat 11:00 Blue Moon  
The Gossamer Strings | Fri 3:00 Blue Moon, Sun 11:00 Blue Moon  
The Macks | Sun 6:00 Community Village  
The Muddy Souls | Sun 4:00 Community Village  
Threedom | Fri 12:00 Main Stage  
Trashcan Joe | Fri 4:30 Morningwood, Sat 4:30 Morningwood  
Trevor Bahnsen | Sun 4:00 Kesey Stage  
Tribute to Robert Hunter | Sun 5:40 Main Stage  
Uncle-B, Auntie-E, & J-Dog | Sat 11:30 Youth Stage  
Weedie Braimah & the Hands of Time | Sun 2:25 Main Stage  
Zöe Winter | Sat 3:15 Kesey Stage



## DANCE/MOVEMENT

Bailamos Latin Dance Network | Sun 2:00 Dance Pavilion  
Bette Plass: Adaptive Yoga for Everyone | Fri 11:00 Dance Pavilion, Sat 11:00 Dance Pavilion  
Claudia! (belly dance lesson) | Fri 12:00 Caravan, Sat 12:00 Caravan, Sun 12:00 Caravan  
DJ Prashant & The Jai Ho! Dance Troupe | Fri 2:00 Dance Pavilion, Sat 2:15 Dance Pavilion  
Ecstatic Dance "Fair Thee Well" with DJ Shawn | Sun 6:00 Dance Pavilion  
Ecstatic Dance with Heather Christie | Sun 11:00 Dance Pavilion  
Ecstatic Dance with Scott Nice | Sat 3:30 Dance Pavilion  
Espacio Flamenco | Sun 3:30 Caravan  
Hoop Fun-damentals! | Fri 3:15 Dance Pavilion, Sat 3:15 Dance Pavilion  
Inside and Out: Movement Improv | Sat 12:00 Dance Pavilion  
It's all Fun and Movement Games | Fri 12:30 Dance Pavilion  
Julia Chigamba & Chinyakare Ensemble | Dance Pavilion Fri 4:15, Sat 1:15, Sun 1:00  
Kay Jeweler | Sun 4:00 Dance Pavilion  
Manoj | Fri 5:30 Dance Pavilion  
Miles Maeda | Sat 5:30 Dance Pavilion  
Paul Deering and Heather Christie | Sun 5:30 Dance Pavilion  
The Caravan Stage Belly Dance Show | Caravan Fri 1:00 & 5:00, Sat 1:00 & 5:00, Sun 1:00 & 5:00



## SPOKEN WORD

BIPOC Sanctuary Stage Takeover | Sat 2:30 Front Porch  
A Witching Hour | Sun 12:00 Spirit Tower  
Alcyon Massive | Fri 6:00 Front Porch, Sat 4:00 Spirit Tower  
Anne Feeney Memorial Set | Sat 3:30 Front Porch  
Arami Walker | Fri 4:00 Spirit Tower, Sat 11:00 Stage Left, Sun 4:00 Spirit Tower  
CelloJoe Show with Amazing Friends | Fri 5:30 Spirit Tower, Sat 5:30 Spirit Tower, Sun 5:30 Spirit Tower  
Climate Change Solution | Fri 11:00 Kesey Stage  
DanceSafe | Fri 1:30 Front Porch, Sat 1:00 Rabbit Hole, Sun 3:00 Rabbit Hole  
David Turner | Sat 2:00 Rabbit Hole, Sun 1:00 Rabbit Hole  
Dr Atomic | Fri 2:00 Spirit Tower, Sat 12:30 Spirit Tower, Sun 3:00 Spirit Tower  
Dreamscapes Academy | Sun 1:30 Front Porch  
Eugene Comedy Crescendo | Fri 3:30 Chez Ray's, Sat 3:30 Chez Ray's, Sun 2:30 Chez Ray's  
Evan Greer | Fri 1:00 Spirit Tower, Sat 3:30 Front Porch, Sun 6:00 Front Porch  
Fooble the Dragon | Fri 5:00 Rabbit Hole, Sat 5:00 Rabbit Hole, Sun 11:30 Rabbit Hole  
Is Your Farm A Business or a NonProfit? | Sun 11:00 Kesey Stage  
Jay Hogan | Fri 3:00 Rabbit Hole  
Jaya Lakshmi | Fri 11:00 Front Porch, Sat 5:30 Front Porch, Sun 11:00 Front Porch  
Kemy Joseph | Fri 2:30 Chez Ray's, Sat 2:30 Chez Ray's, Sun 2:00 Spirit Tower  
Ken Babbs | Fri 1:00 Rabbit Hole  
Lars Adams | Fri 11:00 Stage Left, Sun 4:00 Rabbit Hole  
Laura Stanfill | Fri 4:30 Front Porch, Sat 1:30 Spirit Tower, Sun 12:30 Front Porch  
Laurence Cole & Karly Loveling | Fri 11:30 Rabbit Hole, Sat 11:30 Rabbit Hole, Sun 11:30 Rabbit Hole  
Magical Fiction | Fri 4:30 Front Porch  
Michelle Ruiz-Keil | Fri 12:30 & 4:30 Front Porch, Sat 1:30 Front Porch, Sun 12:30 & 2:30 Front Porch  
Nancy Goodman | Fri 12:00 Spirit Tower, Sat 11:30 Front Porch, Sun 1:00 Spirit Tower  
Opening Ceremony | Fri 11:30 Main Stage  
Rainbow Connection Stage Takeover | Fri 3:30 Front Porch  
Rainbow Drag Show | Sun 4:30 Front Porch  
Rally for Abortion Rights | Sat 2:30 Spirit Tower  
Sanyu Estelle | Fri 1:00 Spirit Tower, Fri 2:30 Front Porch, Sun 1:30 Front Porch  
Sean Ahearn | Fri 11:00 Spirit Tower, Sat 11:00 Spirit Tower, Sun 11:00 Spirit Tower  
Spoken Word Poetry Showcase | Fri 12:00 Chez Ray's, Sat 12:00 Chez Ray's, Sun 12:00 Chez Ray's  
Sterilization: Reproductive Solidarity | Sat 12:30 Front Porch  
Teaching Tales with Lucky Ortiz | Sat 12:45 Youth Stage  
The Art of Storytelling Smorgasbord | Fri 1:30 Chez Ray's, Sat 1:30 Chez Ray's, Sun 1:30 Chez Ray's  
The Witches Muse Podcast Live | Fri 12:30 Front Porch  
Tom Hatsis | Fri 3:00 Spirit Tower, Sat 4:00 Rabbit Hole, Sun 12:00 Spirit Tower, Sun 3:30 Front Porch  
Words of Power Panel | Fri 1:00 Spirit Tower



## VAUDEVILLE

Bellini Family Circus | Fri 2:30 Du Caniveaux, Sat 11:30 Du Caniveaux, Sun 11:00 & 5:00 Du Caniveaux  
Garden Critter Academy Puppets | Fri 12:45 Youth Stage  
Giant Puppets Save the World | Sun 2:30 Youth Stage  
Girl Circus | Fri 5:30 W.C. Fields, Sat 2:00 W.C. Fields, Sun 2:00 W.C. Fields  
Hansel & Regrettal: A Lost Clown Opera | Stage Left Fri 12:00 & 4:00, Sat 12:00 & 4:00, Sun 11:30 & 4:00  
JenUwin the Unicorn w/ Fooble the Dragon | Fri 2:30 Youth Stage  
Jet Black Pearl | Fri 2:30 W.C. Fields, Sat 5:15 W.C. Fields, Sun 12:45 W.C. Fields  
JuggleMania & Co(defendants) | Fri 5:30 Du Caniveaux, Sat 2:30 Du Caniveaux, Sun 3:30 Du Caniveaux  
Kai Heartlife | Sat 4:00 Youth Stage  
Leapin' Louie Goes to War! | Fri 11:30 Du Caniveaux, Sat 5:30 Du Caniveaux, Sun 12:30 Du Caniveaux  
Luna and Julia Puppet Play | Sun 12:45 Youth Stage  
Max | Fri 11:00 Mighty Tiny, Sat 11:00 Mighty Tiny, Sun 12:00 Mighty Tiny  
Mud Bay Jugglers with Vendredi's Bag | Fri 1:00 W.C. Fields, Sat 12:45 W.C. Fields, Sun 11:30 W.C. Fields  
New Old Time Chautauqua 40+1 Bday Bash! | Fri 5:15 Stage Left, Sat 5:15 Stage Left, Sun 1:00 Stage Left  
New Old Time Chautauqua Workshops | Fri 1:30 Stage Left, Sat 1:30 Stage Left, Sun 2:30 Stage Left  
Rose City Circus | Fri 4:00 W.C. Fields, Sat 11:30 W.C. Fields, Sun 5:15 W.C. Fields  
Shae Uisna Puppets/Pelorus Jack | Fri 1:00 Mighty Tiny, Sat 4:00 Mighty Tiny, Sun 2:00 Mighty Tiny  
Shoehorn's Hatband Vaudeville Cabaret | Fri 2:45 Stage Left, Sat 2:45 Stage Left, Sun 5:15 Stage Left  
Sing Out! with Dreamscape Theater | Fri 4:00 Mighty Tiny, Sat 12:00 Mighty Tiny, Sun 4:00 Mighty Tiny  
The Little Mighty Story Box | Fri 12:00 Mighty Tiny, Sat 1:00 Mighty Tiny, Sun 1:00 Mighty Tiny  
The Royal Famille Du Caniveaux | Du Caniveaux Fri 1:00 & 4:00, Sat 1:00 & 4:00, Sun 2:00 & 6:30  
Thistleroot Musical Paper Puppet Theater | Fri 2:00 Mighty Tiny, Sat 2:00 Mighty Tiny, Sun 11:00 Mighty Tiny  
Tom Noddy | Fri 2:00 Rabbit Hole, Fri 4:00 Rabbit Hole, Sat 3:00 Rabbit Hole, Sun 2:00 Rabbit Hole  
UMO Ensemble | Fri 11:30 W.C. Fields, Sat 3:45 W.C. Fields, Sun 3:45 W.C. Fields



# Friday

SEARCHABLE SCHEDULE AT  
OREGONCOUNTRYFAIR.ORG/SCHEDULE



|  | 11:00   | 11:30   | 12:00  | 12:30   | 1:00   | 1:30  | 2:00   |
|--|---|---|--|---|--|---|--|
| <b>Blue Moon Stage</b><br>K4<br>Live on KRVM 91.9 FM | <b>11:00</b> 🎵 📻<br><b>Jim Page</b><br>"If Jim Page ain't the bastard son of Woody Guthrie, I'm T-Bone Walker" —Robert Hunter                                     |   |  | <b>12:20</b> 🎵 📻<br><b>Emily Kokal</b><br>Singer and guitarist of the indie rock band Warpaint with special guests  |  |   | <b>1:40</b> 🎵 📻<br><b>The Chris Chandler Show</b><br>Comforting the afflicted, afflicting the comfortable, wherever the rabble need to be roused                 |
| <b>Caravan Stage</b><br>H3                           |   | <b>11:30</b> 🎵<br><b>George Sadak</b><br>Egyptian drum lesson w/ inspirational rhythms  | <b>12:00</b> 🗣️<br><b>Belly Dance lesson with Claudia!</b><br>An international belly dancer and master teacher shares her deep knowledge of the art form                     |   | <b>1:00</b> 🗣️<br><b>The Caravan Stage Belly Dance Show</b><br>Live Middle Eastern music & belly dance: The Bedouin Spice Orchestra & The Caravan Stage Dancers                    |   |  |
| <b>Chez Ray's Stage</b><br>K6                        |   |   | <b>12:00</b> 🗣️<br><b>Spoken Word Poetry Showcase</b><br>Every day at Chez Rays, these spoken word poets are ready to break your heart, and heal it open                     |   |  | <b>1:30</b> 🗣️ 📻<br><b>The Art of Storytelling Smorgasbord</b><br>Featuring truthful stories presented by seasoned storytellers                                 |  |
| <b>Community Village Stage</b><br>E5                 |   |   | <b>12:00</b> 🎵<br><b>Cassandra Robertson</b><br>Conscious original acoustic folk songs written to inspire  |   |  |   | <b>2:00</b> 🎵<br><b>Aruna Beth Miriam Rose &amp; Friends</b><br>Harmonic seasoned songstresses; soulful folk; songs of peace, love, hope, Earth & social justice |
| <b>Dance Pavilion</b><br>N4                          | <b>11:00</b> 🗣️<br><b>Bette Plass: Adaptive Yoga for Everyone</b><br>Utilize chair, mat, or wheelchair to stretch and strengthen the body and move with more ease |   |  | <b>12:30</b> 🗣️<br><b>It's All Fun and Movement Games</b><br>Join Amaya and Robin in this guided improv movement games workshop—all ages, all bodies welcome! |  |   | <b>2:00</b> 🗣️<br><b>DJ Prashant and the Jai Ho! Dance Troupe</b><br>Teleport to a Bollywood musical at this synchronized interactive dance party!               |
| <b>Du Caniveaux Vaudeville Palace</b><br>B8          |   | <b>11:30</b> 🗣️<br><b>Leapin' Louie Goes to War!</b><br>A cowboy circus comedy accompanied by Michelle Alany and The Mystics                                      |  |   | <b>1:00</b> 🗣️<br><b>The Royal Famille Du Caniveaux</b><br>An epic journey across the Sea in a Sieve—new show in the bejeweled Du Caniveaux Vaudeville Palace                      |   |  |
| <b>The Front Porch</b><br>I2                         | <b>11:00</b> 🗣️<br><b>Jaya Lakshmi</b><br>Kirtan and sacred music   |   |  | <b>12:30</b> 🗣️<br><b>The Witches Muse Podcast Live</b><br>Join host Tara Burke in conversation with author and tarot reader Michelle Ruiz-Keil               |  | <b>1:30</b> 🗣️<br><b>DanceSafe</b><br>Safer spaces: cultivating consent culture   |  |
| <b>Hoarse Chorale Stage</b><br>M8                    |   |   |  | <b>12:20</b> 🎵<br><b>Caitlin Jemma</b><br>Singer songwriter with a celestial new disco-folk album   |  | <b>1:40</b> 🎵<br><b>Sávila</b><br>A medicinal plant and this cumbia/Latin/world R&B-inspired music and dance project  |  |
| <b>Kesey Stage</b><br>F4                             | <b>11:00</b> 🗣️<br><b>Climate Change Solution</b><br>Help activate a national, bipartisan solution that will reduce carbon emissions by 90%!                      |   | <b>12:00</b> 🎵<br><b>Rob Tobias</b><br>"Roots Music" inspired by folk, reggae, and spiritual styles  |   | <b>1:00</b> 🎵<br><b>OCF Singer/Songwriter Showcase</b><br>Hosted by Doug Abrahams, 14 singer/songwriters perform two songs each in a revolving door showcase of amazing OCF talent |   |  |
| <b>Main Stage</b><br>D4                              |   | <b>11:30</b> 🗣️<br><b>Opening Ceremony</b>  | <b>12:00</b> 🎵<br><b>Threedom</b><br>Creative and captivating long-form journeys at the intersection of jambands, jazz, and electronica                                      |   |  | <b>1:20</b> 🎵<br><b>Rizo</b><br>High priestess of cabaret!  |  |
| <b>Mighty Tiny Puppet Theater</b><br>L7              | <b>11:00</b> 🗣️<br><b>Max</b><br>Dioramas of puppet plays in a walk-by display in front of the Mighty Tiny big top  |   | <b>12:00</b> 🗣️<br><b>The Little Mighty Story Box</b><br>PuppetBoy & Big Jacket puppettelling & performing funny business on stage & walking about                           |   | <b>1:00</b> 🗣️<br><b>Shae Uisna Puppets/Pelorus Jack</b><br>The Legend of Pelorus Jack, a white dolphin that guided ships through a dangerous pass                                 |   | <b>2:00</b> 🗣️<br><b>Thistleroot Musical Paper Puppet Theater</b><br>Luna and Julia: The story of Julia Butterfly & the redwood tree she lived in for two years  |
| <b>Monkey Palace</b><br>L8                           |   | <b>11:30</b> 🎵<br><b>Llorona – Mexamericana &amp; Ghost Folk</b><br>Love, loss, truth and dreams at the crossroads of traditional Mexican and contemporary styles |  | <b>12:45</b> 🗣️<br><b>JuggleMania</b><br>Hilarity and dexterity sustainably harvested (may contain nuts)  |  |   | <b>2:00</b> 🎵<br><b>De Solution</b><br>Zimbabwean reggae music to uplift people across all cultures  |
| <b>Morningwood Odditorium</b><br>M6                  |   |   | <b>12:00</b> 🗣️<br><b>Fremont Players and Philharmonic</b><br>Original Musical Panto: The Empress' New Clothes   |   |  | <b>1:30</b> 🎵<br><b>Glitterfox</b><br>Indiefolk awesomeness illuminating the edges of tender love through a ragged storyline                                    |  |
| <b>The Rabbit Hole</b><br>I3                         |   | <b>11:30</b> 🗣️<br><b>Laurence Cole &amp; Karly Loveling</b><br>Singing together, nourishing community  |  |   | <b>1:00</b> 🗣️<br><b>Ken Babbs</b><br>New Book: <i>Cronies, A Burlesque: Adventures with Ken, Neal, Merry Pranksters and the Dead</i>  |   | <b>2:00</b> 🗣️ 📻<br><b>Tom Noddy</b><br>Bubble magic   |
| <b>Spirit Tower</b><br>I5                            | <b>11:00</b> 🗣️<br><b>Sean Ahearn</b><br>History and the mystery of the Oregon Country Fair   |   | <b>12:00</b> 🗣️<br><b>Nancy Goodman</b><br>Mythic Living, The Heroic Journey: Apply elements of the hero/ine's journey to your daily life!                                   |   | <b>1:00</b> 🗣️<br><b>Words of Power Panel</b><br>Sanyu Estelle, Evan Greer & more discuss reclaiming slurs to resist institutionalized oppression                                  |   | <b>2:00</b> 🗣️<br><b>Dr. Atomic</b><br>Poking fun at what needs to be poked with spoken word, music, and drama   |
| <b>Stage Left</b><br>K6                              | <b>11:00</b> 🗣️<br><b>Lars Adams</b><br>Clown around with Lars Adams at Stage Left!   |   | <b>12:00</b> 🗣️<br><b>Hansel &amp; Regrettal: A Lost Clown Opera</b><br>Follow breadcrumbs to a wayward musical fairyland of perilous acrobatics and nontoxic physical humor |   |  | <b>1:30</b> 🗣️<br><b>New Old Time Chautauqua Workshops</b><br>Learn to juggle, hula hoop/kumihimo/spontaneous storytelling/quilting/magic/doctrine of discovery |  |
| <b>W.C. Fields Memorial Stage</b><br>H4              |   | <b>11:30</b> 🗣️<br><b>UMO Ensemble</b><br>A ship of fools, hanging from the rigging and singing to the moon, searching for...                                     |  |   | <b>1:00</b> 🗣️<br><b>Mud Bay Jugglers with Vendredi's Bag</b><br>A wildly creative and humorous juggling ensemble featuring music, mirth—and lots of surprises!                    |   |  |
| <b>Youth Stage</b><br>J3                             |   | <b>11:30</b> 🎵 📻<br><b>Linda Yapp the Lemon Drop Fairy</b><br>Sharing songs of hope, kindness, and peace with the young at heart                                  |  | <b>12:45</b> 🗣️ 📻<br><b>Garden Critter Academy Puppets</b><br>Munch Buzz Bloom! Your garden is safe from pests with the Garden Critter Academy Super Heroes!  |  |   |  |

11:00 11:30 12:00 12:30 1:00 1:30 2:00





# July 8th

Sign Language Interpreted

Music Vaudeville Dance/Movement Spoken Word

| 2:30  | 3:00  | 3:30   | 4:00  | 4:30  | 5:00   | 5:30  | 6:00  |                     |
|---|---|--|---|---|--|---|---|---------------------|
|   | <b>3:00</b><br><b>The Gossamer Strings</b><br>Harmony driven Americana with guitar, banjo, and mandolin   |  |   | <b>4:20</b><br><b>Adam East &amp; Kris Deelane</b><br>Fun, insightful music   |  |   | <b>5:50</b><br><b>Sara B3 &amp; 45 RPM Soul Revue</b><br>Soul revue band plays hits from the 1960s and '70s                             | Blue Moon           |
|   |   |  |   |   | <b>5:00</b><br><b>The Caravan Stage Belly Dance Show</b><br>Live Middle Eastern music & belly dance:<br>The Bedouin Spice Orchestra & The Caravan Stage Dancers        |   |   | Caravan             |
| <b>2:30</b><br><b>Kemy Joseph</b><br>Uplifting fusion of motivational music, crowd-sourced freestyles, laughter, good vibes!  |   | <b>3:30</b><br><b>Eugene Comedy Crescendo</b><br>Fun, laughter, and good times as we present professional stand-up comedy from top local comedians       |   |   |  |   |   | Chez Ray's          |
|   |   |  | <b>4:00</b><br><b>Tara Velarde &amp; The Good Time Kids</b><br>Singer-songwriter from Portland, diva pop and soul with dynamic vocals and powerful lyrics                         |   |  |   | <b>6:00</b><br><b>Candy Picnic</b><br>Eugene four-piece alternative/indie rock—their upbeat performance will energize any crowd         | Community Village   |
|   |   | <b>3:15</b><br><b>Hoop Fun-damentals</b><br>Learn the fun-damentals of hoop dance w/ Bright Heart Circus—children ages 2-102!                            |   | <b>4:15</b><br><b>Julia Chigamba &amp; Chinyakare Ensemble</b><br>Zimbabwean traditional music and dance for all ages                                       |  | <b>5:30</b><br><b>Manoj</b><br>Deep, tribal, ethnic and progressive house music dance party   |   | Dance Pavilion      |
| <b>2:30</b><br><b>Bellini Family Circus</b><br>Wild and crazy family circus with dancing tents and chainsaw ballet  |   |  | <b>4:00</b><br><b>The Royal Famille Du Caniveaux</b><br>An epic journey across the Sea in a Sieve—new show in the bejeweled Du Caniveaux Vaudeville Palace                        |   |  | <b>5:30</b><br><b>JuggleMania &amp; Co(defendants)</b><br>If variety is the spice of life, JuggleMania is the wasabi                                    |   | Du Caniveaux Palace |
| <b>2:30</b><br><b>Sanyu Estelle</b><br>Explore the root meaning of specific words & how they've developed in sense meaning over time                                    |   | <b>3:30</b><br><b>Rainbow Connection Stage Takeover</b><br>Join the organizers of the Fair's new Rainbow Connection booth for a takeover of Front Porch! |   | <b>4:30</b><br><b>Magical Fiction</b><br>Portland-based authors Michelle Ruiz Keil and Laura Stanfill in conversation                                       |  |   | <b>6:00</b><br><b>Alcyon Massive</b><br>A set of musical magic, performed by sonic alchemists of the highest order                      | Front Porch         |
|   | <b>3:00</b><br><b>Lewi Longmire and L'Thirst Trap</b><br>Roots rocker Lewi brings out PNW rock-and-roll in the tradition of Portland's Laurelthirst Pub             |  | <b>4:20</b><br><b>Alder Street</b><br>Originals inspired by traditional bluegrass and reprises from Iron Maiden to Bill Monroe  |   |  | <b>5:50</b><br><b>Moonalice</b><br>A journey through the sounds of the 60's with T Sisters and The New Chambers Brothers                                |   | Hearse Chivrale     |
|   | <b>3:15</b><br><b>Olivia de La Cruz</b><br>Sultry indie folk from Seattle/Sayulita w/ songs about love, loss & growth   |  | <b>4:00</b><br><b>Cassandra Lewis</b><br>Cosmic classic country/Americana/psych-soul singer of depth, wit, and wonder returns to OCF  |   | <b>5:00</b><br><b>Reb &amp; The Good News</b><br>World-beats & funky grooves intermix w/ soulful horns & velvet vocals to create songs of hope                         |   | <b>6:00</b><br><b>Gabriel Wolfchild Band</b><br>Seattle and Maui-based cinematic folk rock with heart and soul...and a grungesque pulse | Keesey Stage        |
| <b>2:40</b><br><b>Moorea Masa &amp; The Mood</b><br>Emotional vocal performances with lush beds of harmonies and dreamlike textures—with Swatkins                       |   |  | <b>4:05</b><br><b>MonoNeon Band</b><br>Grammy winner MonoNeon's slapping style is unique because he is executing everything upside-down   |   |  | <b>5:45</b><br><b>MarchFourth</b><br>A kaleidoscope of musical and visual energy inspiring unabashed dancing and celebration                            |   | Main Stage          |
|   |   |  | <b>4:00</b><br><b>Sing out! with Dreamscape Theater</b><br>Join puppets Abby & Arnie to sing some of your favorite classic songs with the help of some special guests and friends |   |  |   |   | Mighty Tiny Theater |
|   |   | <b>3:15</b><br><b>SageCrow The Flock</b><br>Neo-soul, hip hop stew, seasoned with jazz, funk, reggae, and garnished with spoken word poetry              |   | <b>4:30</b><br><b>Robin Jackson and The Caravan</b><br>An eclectic NW ensemble to get your feet shakin' with dreamy folk, soulful jazz, and dusty Americana |  |   | <b>6:00</b><br><b>Grupo Masato</b><br>Latin dance music blending Andean melodies on surf guitars over Cumbia rhythms and vocals         | Monkey Palace       |
|   | <b>3:00</b><br><b>Fremont Players and Philharmonic</b><br>Original Musical Panto: The Empress' New Clothes  |  |   | <b>4:30</b><br><b>Trashcan Joe</b><br>20 years of reinventing swing, jazz, folk, and blues with original music and homemade instruments                     |  |   | <b>6:00</b><br><b>Banshee Tree</b><br>Colorado-based, blending traditional swing with modern dance, rock, pop and indie soul            | Morningwd           |
|   | <b>3:00</b><br><b>Jay Hogan</b><br>HAIR! Hair is the intersection of racism, sexism, ageism, classism, politics & religion  |  | <b>4:00</b><br><b>Tom Noddy</b><br>Bubble magic   |   | <b>5:00</b><br><b>Fooble the Dragon</b><br>A puppet show delighting audiences of all ages with stories and song!   |   |   | Rabbit Hole         |
|   | <b>3:00</b><br><b>Tom Hatsis</b><br>Psychedelic witchcraft in history and practice  |  | <b>4:00</b><br><b>Arami Walker</b><br>R&B, soul, hip hop, world arts & culture, and spoken word   |   |  | <b>5:30</b><br><b>The CelloJoe Show with Amazing Friends</b>  |   | Spirit Tower        |
|   | <b>2:45</b><br><b>Shoehorn's Hatband Vaudeville Cabaret</b><br>Shoehorn's Hatband will provide a lively soundtrack to invited artistes from the Oregon Country Fair |  | <b>4:00</b><br><b>Hansel &amp; Regrettal: A Lost Clown Opera</b><br>Follow breadcrumbs to a wayward musical fairyland of perilous acrobatics and nontoxic physical humor          |   | <b>5:15</b><br><b>New Old Time Chautauqua 40+1 Bday Bash!</b><br>The New Old Time Chautauqua's 40+1 Birthday Bash celebrates four decades of hot variety entertainment |   |   | Stage Left          |
| <b>2:30</b><br><b>Jet Black Pearl</b><br>A mad hatter's European party with live looped beats, accordion and flutes   |   |  | <b>4:00</b><br><b>Rose City Circus</b><br>Returning to the Oregon Country Fair with a high flying acrobatic circus  |   |  | <b>5:30</b><br><b>Girl Circus</b><br>Coming July 2022...Popcorn! Red carpet! Girl Circus Films presents <i>The Movies!</i>                              |   | W.C. Fields         |
| <b>2:30</b><br><b>JenUwin the Unicorn w/ Fooble the Dragon</b><br>Musical and storytelling pals who engage audiences with humor, songs, dance & audience participation! |   |  | <b>4:00</b><br><b>Fortune's Folly</b><br>Creating a passionate, accepting & engaged community through music & performance   |   |  | <b>5:30</b><br><b>Ras Gabriel and Joe Ginet'</b><br>Ras Gabriel & Joe Ginet' of 4Word Reggae deliver a potent semi-acoustic set for youths of all ages! |   | Youth Stage         |
| 2:30  | 3:00  | 3:30   | 4:00  | 4:30  | 5:00   | 5:30  | 6:00  |                     |



# Saturday

SEARCHABLE SCHEDULE AT  
OREGONCOUNTRYFAIR.ORG/SCHEDULE



|  | 11:00  | 11:30   | 12:00   | 12:30  | 1:00   | 1:30   | 2:00   |
|--|--|---|---|--|--|--|--|
| <b>Blue Moon Stage</b><br>K4<br>Live on KRVM 91.9 FM | <b>11:00</b> 🎵<br><b>The Chris Chandler Show</b><br>Comforting the afflicted, afflicting the comfortable, wherever the rabble need to be roused                  |   | <b>12:20</b> 🎵 🎧<br><b>Scott Law</b><br>Cosmic twang from an "esteemed flat-picker"   |  |  | <b>1:40</b> 🎵 🎧<br><b>Brian Cutean</b><br>Squint yer ears! Hot string band, wordplay, hilarity, and audience precipitation                                     |  |
| <b>Caravan Stage</b><br>H3                           |  | <b>11:30</b> 🎵<br><b>George Sadak</b><br>Egyptian drum lesson w/ inspirational rhythms  | <b>12:00</b> 🦋<br><b>Belly Dance lesson with Claudia!</b><br>An international belly dancer and master teacher shares her deep knowledge of the art form                     |  | <b>1:00</b> 🦋<br><b>The Caravan Stage Belly Dance Show</b><br>Live Middle Eastern music & belly dance: The Bedouin Spice Orchestra & The Caravan Stage Dancers                     |  |  |
| <b>Chez Ray's Stage</b><br>K6                        |  |   | <b>12:00</b> 🗣️<br><b>Spoken Word Poetry Showcase</b><br>Every day at Chez Rays, these spoken word poets are ready to break your heart, and heal it open                    |  |  | <b>1:30</b> 🗣️<br><b>The Art of Storytelling Smorgasbord</b><br>Featuring truthful stories presented by seasoned storytellers                                  |  |
| <b>Community Village Stage</b><br>E5                 |  |   | <b>12:00</b> 🎵<br><b>Jim Page</b><br>Acoustic singer-songwriter with 24 recordings to date  |  |  |  | <b>2:00</b> 🎵<br><b>A Side of Beets</b><br>Acoustic Sugar Beets with Marty, Matt, Megan, and special guests  |
| <b>Dance Pavilion</b><br>N4                          | <b>11:00</b> 🦋<br><b>Bette Plass: Adaptive Yoga for Everyone</b><br>Utilize chair, mat, or wheelchair to stretch and strengthen the body and move with more ease |   | <b>12:00</b> 🦋<br><b>Inside &amp; Out: Movement Improv</b><br>Amaya & Alison guide you to explore your authentic movement and the connection to your environment            |  | <b>1:15</b> 🦋<br><b>Julia Chigamba &amp; Chinyakare Ensemble</b><br>Zimbabwean traditional music and dance for all ages  |  | <b>2:15</b> 🦋<br><b>DJ Prashant and Jai Ho!</b><br>Teleport to Bollywood at this interactive dance party!  |
| <b>Du Caniveaux Vaudeville Palace</b><br>B8          |  | <b>11:30</b> 🎭<br><b>Bellini Family Circus</b><br>Wild and crazy family circus with dancing tents and chainsaw ballet                         |   |  | <b>1:00</b> 🎭<br><b>The Royal Famille Du Caniveaux</b><br>An epic journey across the Sea in a Sieve—new show in the bejeweled Du Caniveaux Vaudeville Palace                       |  |  |
| <b>The Front Porch</b><br>I2                         |  | <b>11:30</b> 🗣️<br><b>Nancy Goodman</b><br>Mythic Living, The Heroic Journey: Apply elements of the hero/ine's journey to your daily life!    |   | <b>12:30</b> 🗣️<br><b>Sterilization: Reproductive Solidarity</b><br>Join a person with a uterus and one with testes to hear their sterilization stories & ask questions! |  | <b>1:30</b> 🗣️<br><b>Michelle Ruiz-Keil</b><br>Using tarot, bibliomancy, and other divination to solve artistic problems and end creative blocks               |  |
| <b>Hoarse Chorale Stage</b><br>M8                    |  |   | <b>12:20</b> 🎵<br><b>Sweet N' Juicy</b><br>A banana named Sweet, a Pineapple named N', and a Strawberry named Juicy make you dance  |  |  | <b>1:40</b> 🎵 🎧<br><b>Adam East &amp; Kris Deelane</b><br>Fun, insightful music  |  |
| <b>Kesey Stage</b><br>F4                             | <b>11:00</b> 🎵<br><b>Jacobs-Strain &amp; Worth</b><br>Bohemian blues indie folk artists gift their booming soulful range with well-traveled style                |   | <b>12:00</b> 🎵<br><b>Space Neighbors</b><br>An intergalactic journey with original retro future classics out of Corvallis   |  | <b>1:00</b> 🎵<br><b>OCF Singer/Songwriter Showcase</b><br>Hosted by Doug Abrahams, 14 singer/songwriters perform two songs each in a revolving door showcase of amazing OCF talent |  |  |
| <b>Main Stage</b><br>D4                              |  | <b>11:30</b> 🎵<br><b>Handmade Moments</b><br>Dip into the well of jazz, old-time country, blues, soul, rock & hip hop                         | <b>12:10</b> 🎵<br><b>High Step Society</b><br>The honeyed tones of the Jazz Age melded with the hottest bass drops of the new millennium                                    |  | <b>1:20</b> 🎵<br><b>Russ Liquid</b><br>Fusing the raw vitality of classic funk and the sound design of electronic production   |  |  |
| <b>Mighty Tiny Puppet Theater</b><br>L7              | <b>11:00</b> 🎭<br><b>Max</b><br>Dioramas of puppet plays in a walk-by display in front of the Mighty Tiny big top  |   | <b>12:00</b> 🎭<br><b>Sing out! with Dreamscape Theater</b><br>Join puppets Abby & Arnie to sing some of your favorite classic songs w/ help from special guests             |  | <b>1:00</b> 🎭<br><b>The Little Mighty Story Box</b><br>PuppetBoy & Big Jacket puppetelling & performing funny business on stage & walking about                                    |  | <b>2:00</b> 🎭<br><b>Thistleroot Musical Paper Puppet Theater</b><br>Luna and Julia: The story of Julia Butterfly & the redwood tree she lived in for two years |
| <b>Monkey Palace</b><br>L8                           |  | <b>11:30</b> 🎵<br><b>Solovox</b><br>Blurring the line between musician and DJ, live compositions of future-funk, electro-house, and downtempo |   | <b>12:45</b> 🎵<br><b>Beat Crunchers</b><br>Fresh and funky with Brazilian percussion and exuberant horns, Afropop to Balkan to Cumbia                                    |  |  | <b>2:00</b> 🎵<br><b>Saloon Ensemble</b><br>A bottomless bucket of ear-poppin' originals & twisted pop hits performed w/ wild & crazy flare                     |
| <b>Morningwood Odditorium</b><br>M6                  |  |   | <b>12:00</b> 🎭<br><b>Fremont Players and Philharmonic</b><br>Original Musical Panto: The Empress' New Clothes Original  |  |  | <b>1:30</b> 🎵<br><b>Banshee Tree</b><br>Colorado-based, Banshee Tree, blends traditional swing with modern dance, rock, pop and indie soul                     |  |
| <b>The Rabbit Hole</b><br>I3                         |  | <b>11:30</b> 🗣️<br><b>Laurence Cole &amp; Karly Loveling</b><br>Singing together, nourishing community  |   |  | <b>1:00</b> 🗣️<br><b>DanceSafe</b><br>A brief history of the war on (people who use) drugs   |  | <b>2:00</b> 🗣️<br><b>David Turner</b><br>Along the Long Tom River: Observations from the past and present  |
| <b>Spirit Tower</b><br>I5                            | <b>11:00</b> 🗣️<br><b>Sean Ahearn</b><br>History and the mystery of the Oregon Country Fair  |   |   | <b>12:30</b> 🗣️<br><b>Dr. Atomic</b><br>Poking fun at what needs to be poked with spoken word, music, and drama  |  | <b>1:30</b> 🗣️<br><b>Laura Stanfill</b><br><i>Creativity and Joy</i> publisher and debut author Laura Stanfill will discuss play as a grief balm               |  |
| <b>Stage Left</b><br>K6                              | <b>11:00</b> 🗣️<br><b>Arami Walker</b><br>R&B, soul, hip hop, world arts & culture, and spoken word  |   | <b>12:00</b> 🎭<br><b>Hansel &amp; Regrettal: A Lost Clown Opera</b><br>Follow breadcrumbs to a wayward musical fairyland of perilous acrobatics and nontoxic physical humor |  |  | <b>1:30</b> 🎭<br><b>New Old Time Chautauqua Workshops</b><br>Learn to juggle, hula hoop/kumihimo/spontaneous storytelling/quilting/magic/doctrine of discovery |  |
| <b>W.C. Fields Memorial Stage</b><br>H4              |  | <b>11:30</b> 🎭<br><b>Rose City Circus</b><br>Returning to the Oregon Country Fair with a high flying acrobatic circus                         |   | <b>12:45</b> 🎭<br><b>Mud Bay Jugglers with Vendredi's Bag</b><br>A wildly creative and humorous juggling ensemble featuring music, mirth—and lots of surprises!          |  |  | <b>2:00</b> 🎭 🎧<br><b>Girl Circus</b><br>Coming July 2022...Popcorn! Red carpet! Girl Circus Films presents <i>The Movies!</i>                                 |
| <b>Youth Stage</b><br>J3                             |  | <b>11:30</b> 🎵<br><b>Uncle-B, Auntie-E, and J-Dog</b><br>FUN! Interactive songs and instruments for all                                       |   | <b>12:45</b> 🗣️ 🎧<br><b>Teaching Tales with Lucky Ortiz</b><br>A storyteller bringing Native American teaching tales to life   |  |  |  |

11:00 11:30 12:00 12:30 1:00 1:30 2:00





# July 9th

Sign Language Interpreted

Music Vaudeville Dance/Movement Spoken Word

| 2:30   | 3:00  | 3:30   | 4:00  | 4:30 | 5:00   | 5:30   | 6:00  |                     |
|--|---|--|---|------|--|--|---|---------------------|
|  | <b>3:00</b><br><b>Emily Kokal</b><br>Singer and guitarist of the indie rock band Warpaint with special guests   |  | <b>4:20</b><br><b>Sávila</b><br>A medicinal plant and this Cumbia/Latin/World/R&B-inspired music and dance project  |      |  | <b>5:50</b><br><b>Free Creatures</b><br>Marv Ellis and Emily Turner present jazz samples and dance beats with uplifting lyrics and harmonies       |   | Blue Moon           |
|  |   | <b>3:30</b><br><b>Michelle Alany and The Mystics</b><br>Mediterranean, Balkan and Sephardic soul music, with Middle Eastern sensibilities          |   |      | <b>5:00</b><br><b>The Caravan Stage Belly Dance Show</b><br>Live Middle Eastern music & belly dance:<br>The Bedouin Spice Orchestra & The Caravan Stage Dancers        |  |   | Caravan             |
| <b>2:30</b><br><b>Kemy Joseph</b><br>Uplifting fusion of motivational music, crowd-sourced freestyles, laughter, good vibes!                         |   | <b>3:30</b><br><b>Eugene Comedy Crescendo</b><br>Fun, laughter, and good times as we present professional stand-up comedy from top local comedians |   |      |  |  |   | Chez Ray's          |
|  |   |  | <b>4:00</b><br><b>Invisible Arts Project</b><br>Eclectic beat poetry and jazz   |      |  |  | <b>6:00</b><br><b>Bluphoria</b><br>A four-piece, black-fronted, psych-rock band with a summer debut album release                 | Community Village   |
|  |   | <b>3:15</b><br><b>Hoop Fun-damentals</b><br>Hoop dance   | <b>3:30</b><br><b>Ecstatic Dance with Scott Nice</b><br>Prayerful dance music with afro latin roots that moves the body and feeds the soul  |      |  | <b>5:30</b><br><b>Miles Maeda</b><br>Healing dance music vibes for the body, mind, and spirit  |   | Dance Pavilion      |
| <b>2:30</b><br><b>JuggleMania &amp; Co(defendants)</b><br>If variety is the spice of life, JuggleMania is the wasabi                                 |   |  | <b>4:00</b><br><b>The Royal Famille Du Caniveaux</b><br>An epic journey across the Sea in a Sieve—new show in the bejeweled Du Caniveaux Vaudeville Palace                            |      |  | <b>5:30</b><br><b>Leapin' Louie Goes to War!</b><br>A cowboy circus comedy accompanied by Michelle Alany and The Mystics                           |   | Du Caniveaux Palace |
| <b>2:30</b><br><b>BIPOC Sanctuary Stage Takeover</b><br>Join the organizers of the Fair's new BIPOC Sanctuary for a takeover of Front Porch!         |   | <b>3:30</b><br><b>Anne Feeney Memorial Set</b><br>Evan Greer hosts a memorial set for legendary folksinger and activist Anne Feeney                |   |      |  | <b>5:30</b><br><b>Jaya Lakshmi</b><br>Kirtan and sacred music  |   | Front Porch         |
|  | <b>3:00</b><br><b>Ashleigh Flynn and The Riveters</b><br>All female Americana, bluegrass and rock   |  | <b>4:20</b><br><b>Glitterfox</b><br>Indie folk, rough-around-the-edges Americana  |      |  | <b>5:50</b><br><b>Ron Artis II</b><br>Love is love   |   | Hearse Chivrale     |
|  | <b>3:15</b><br><b>Zoe Winter</b><br>Soulful, indie folk artist with a vocal gift out of 1960's Greenwich Village  |  | <b>4:00</b><br><b>Halley Greg</b><br>Seattle soulful feminist rock artist and The Voice alum...shares her poetry in musical motion  |      | <b>5:00</b><br><b>Brett Sisun</b><br>Jazz, folk, storytelling, comedy, art performance   |  | <b>6:00</b><br><b>Graham Patzner</b><br>Gospel/soul/rock opera/indie folk multi-instrumental artist...also fronts Whiskerman Band | Keesey Stage        |
| <b>2:40</b><br><b>Ron Artis II</b><br>Love is love   |   |  | <b>4:10</b><br><b>Moonalice</b><br>A journey through the sounds of the 60's with T Sisters and The New Chambers Brothers  |      |  | <b>5:45</b><br><b>California Honeydrops</b><br>Bay Area R&B, funk, soul, Delta blues, and New Orleans second-line in a vibrant energy dance party! |   | Main Stage          |
|  |   |  | <b>4:00</b><br><b>Shae Uisna Puppets/Pelorus Jack</b><br>The Legend of Pelorus Jack, a white Risso's dolphin that guided ships through the dangerous pass of Te Aumiti in New Zealand |      |  |  |   | Mighty Tiny Theater |
|  | <b>3:15</b><br><b>De Solution</b><br>Zimbabwean reggae music to uplift people across all cultures   |  | <b>4:30</b><br><b>Grupo Masato</b><br>Latin dance music blending Andean melodies on surf guitars over Cumbia rhythms with soaring vocals  |      |  | <b>6:00</b><br><b>SageCrew The Flock</b><br>Neo-soul, hip hop stew, seasoned w/ jazz, funk, reggae, and garnished w/ spoken word poetry            |   | Monkey Palace       |
|  | <b>3:00</b><br><b>Fremont Players and Philharmonic</b><br>Original Musical Panto:<br>The Empress' New Clothes Original  |  | <b>4:30</b><br><b>Trashcan Joe</b><br>20 years of reinventing swing, jazz, folk, and blues with original music and homemade instruments   |      |  | <b>6:00</b><br><b>Llorona</b><br>Love, loss, truth, and dreams at the crossroads of traditional Mexican and contemporary styles                    |   | Morningwd           |
|  | <b>3:00</b><br><b>Tom Noddy</b><br>Bubble magic   |  | <b>4:00</b><br><b>Tom Hatsis</b><br>Psychedelic witchcraft in history and practice  |      | <b>5:00</b><br><b>Fooble the Dragon</b><br>A puppet show delighting audiences of all ages with stories and song!   |  |   | Rabbit Hole         |
| <b>2:30</b><br><b>Rally for Abortion Rights</b><br>Join fair family activists against forced birth to support the human right to healthcare & choice |   |  | <b>4:00</b><br><b>Alcyon Massive</b><br>A set of musical magic, performed by sonic alchemists of the highest order  |      |  | <b>5:30</b><br><b>The CelloJoe Show with Amazing Friends</b>   |   | Spirit Tower        |
|  | <b>2:45</b><br><b>Shoehorn's Hatband Vaudeville Cabaret</b><br>Shoehorn's Hatband will provide a lively soundtrack to invited artistes from the Oregon Country Fair |  | <b>4:00</b><br><b>Hansel &amp; Regretal: A Lost Clown Opera</b><br>Follow breadcrumbs to a wayward musical fairyland of perilous acrobatics and nontoxic physical humor               |      | <b>5:15</b><br><b>New Old Time Chautauqua 40+1 Bday Bash!</b><br>The New Old Time Chautauqua's 40+1 Birthday Bash celebrates four decades of hot variety entertainment |  |   | Stage Left          |
|  |   | <b>3:45</b><br><b>UMO Ensemble</b><br>A ship of fools, hanging from the rigging and singing to the moon, searching for...                          |   |      | <b>5:15</b><br><b>Jet Black Pearl</b><br>A mad hatter's European party with live looped beats, accordion and flutes  |  |   | W.C. Fields         |
|  |   | <b>4:00</b><br><b>Kai Heartlife</b><br>15-year-old Kai Heartlife will amaze you with juggling, comedy, slam poetry, and more!                      |   |      | <b>5:30</b><br><b>Fox and Bones</b><br>Whimsical modern folk duo from Portland   |  |   | Youth Stage         |
| 2:30   | 3:00  | 3:30   | 4:00  | 4:30 | 5:00   | 5:30   | 6:00  |                     |



1 2 3 4 5 6 7 8 9



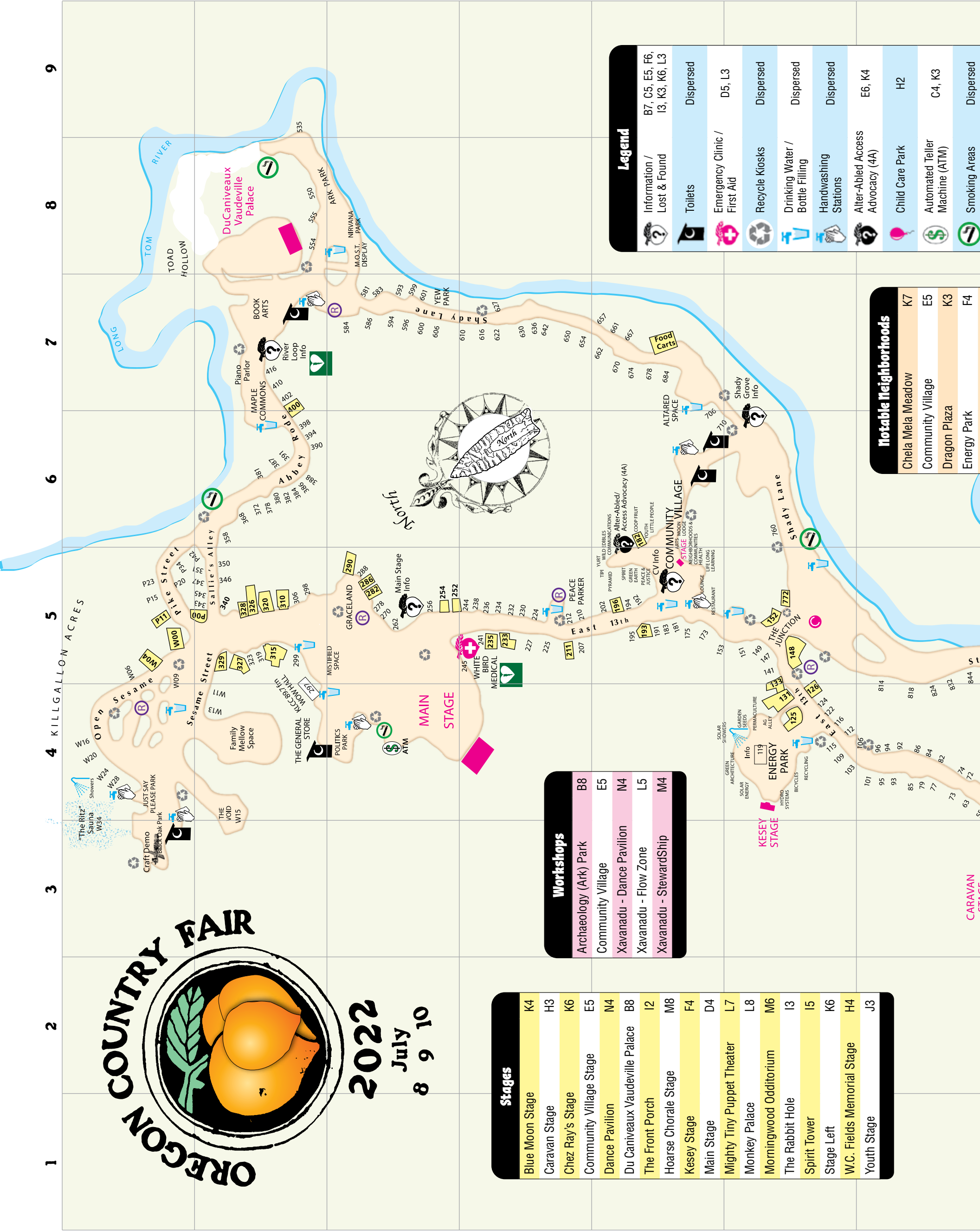
2022  
July  
8 9 10

| Stages                         |    |
|--------------------------------|----|
| Blue Moon Stage                | K4 |
| Caravan Stage                  | H3 |
| Chez Ray's Stage               | K6 |
| Community Village Stage        | E5 |
| Dance Pavilion                 | N4 |
| Du Caniveaux Vaudeville Palace | B8 |
| The Front Porch                | I2 |
| Hoarse Chorale Stage           | M8 |
| Kesey Stage                    | F4 |
| Main Stage                     | D4 |
| Mighty Tiny Puppet Theater     | L7 |
| Monkey Palace                  | L8 |
| Morningwood Odditorium         | M6 |
| The Rabbit Hole                | I3 |
| Spirit Tower                   | I5 |
| Stage Left                     | K6 |
| W.C. Fields Memorial Stage     | H4 |
| Youth Stage                    | J3 |

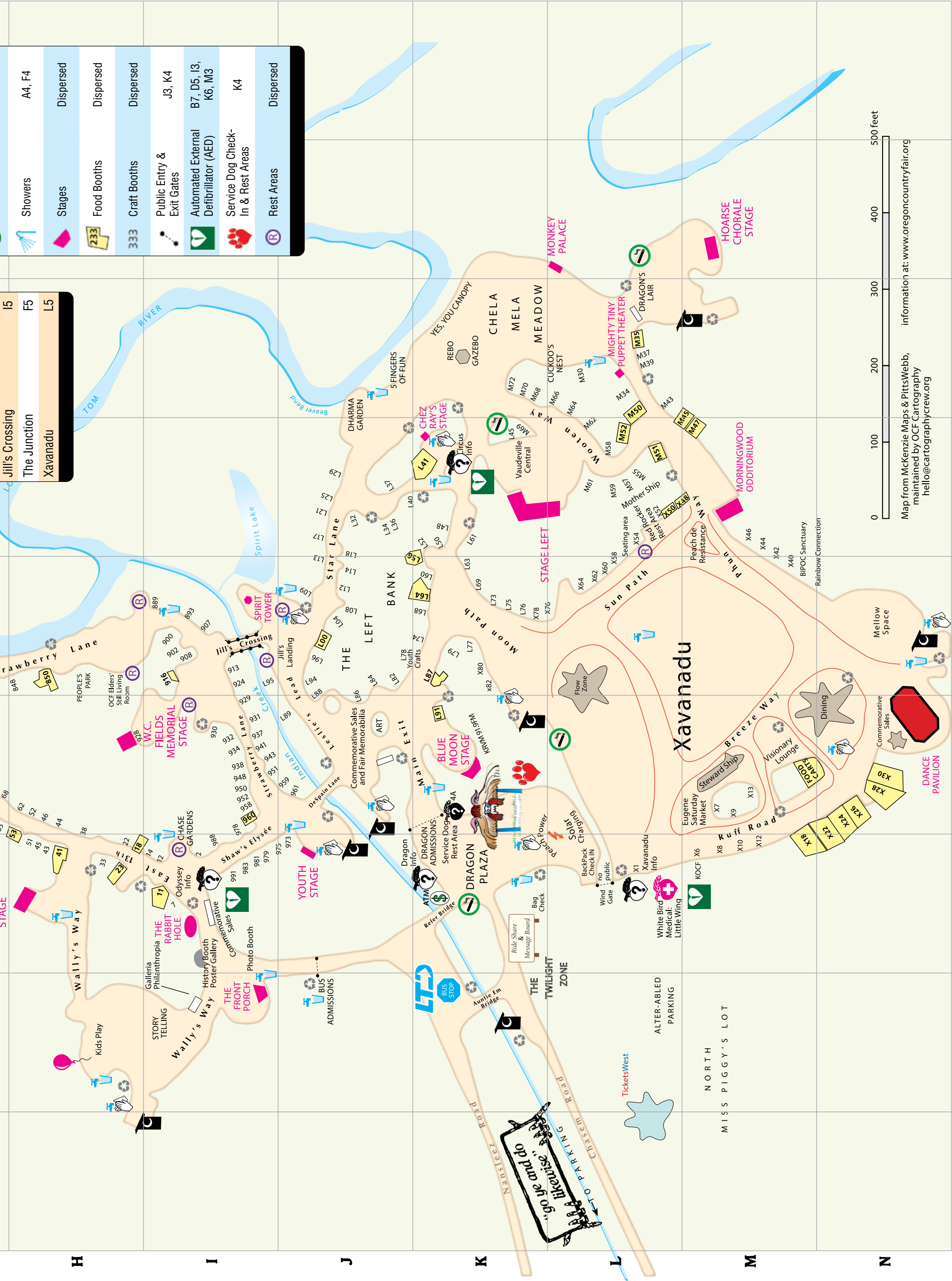
| Workshops                 |    |
|---------------------------|----|
| Archaeology (Ark) Park    | B8 |
| Community Village         | E5 |
| Xavanadu - Dance Pavilion | N4 |
| Xavanadu - Flow Zone      | L5 |
| Xavanadu - StewardShip    | M4 |

| Notable Neighborhoods |    |
|-----------------------|----|
| Chela Mela Meadow     | K7 |
| Community Village     | E5 |
| Dragon Plaza          | K3 |
| Energy Park           | F4 |

| Legend                          |                                |
|---------------------------------|--------------------------------|
| Information / Lost & Found      | B7, C5, E5, F6, I3, K3, K6, L3 |
| Toilets                         | Dispersed                      |
| Emergency Clinic / First Aid    | D5, L3                         |
| Recycle Kiosks                  | Dispersed                      |
| Drinking Water / Bottle Filling | Dispersed                      |
| Handwashing Stations            | Dispersed                      |
| Alter-Able Access Advocacy (4A) | E6, K4                         |
| Child Care Park                 | H2                             |
| Automated Teller Machine (ATM)  | C4, K3                         |
| Smoking Areas                   | Dispersed                      |

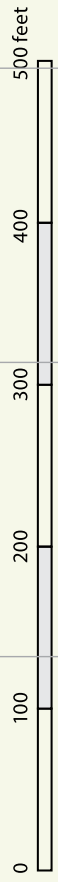






|  |  |                    |
|--|--|--------------------|
|  | Showers                                | A4, F4             |
|  | Stages                                 | Dispersed          |
|  | Food Booths                            | Dispersed          |
|  | Craft Booths                           | Dispersed          |
|  | Public Entry & Exit Gates              | J3, K4             |
|  | Automated External Defibrillator (AED) | B7, D5, I3, K6, M3 |
|  | Service Dog Check-In & Rest Areas      | K4                 |
|  | Rest Areas                             | Dispersed          |

|                 |    |
|-----------------|----|
| Jill's Crossing | I5 |
| The Junction    | F5 |
| Xavanadu        | L5 |



Map from McKenzie Maps & PittsWebb, maintained by OCF Cartography  
hello@cartographycrew.org  
information at: [www.oregoncountryfair.org](http://www.oregoncountryfair.org)



# Sunday

SEARCHABLE SCHEDULE AT  
OREGONCOUNTRYFAIR.ORG/SCHEDULE



|  | 11:00   | 11:30   | 12:00  | 12:30  | 1:00   | 1:30  | 2:00   |
|--|---|---|--|--|--|---|--|
| <b>Blue Moon Stage</b><br>K4<br>Live on KRVM 91.9 FM | <b>11:00</b> 🎵<br><b>The Gossamer Strings</b><br>Harmony driven Americana with guitar, banjo and mandolin   |   | <b>12:20</b> 🎵<br><b>Jim Page</b><br>"If Jim Page ain't the bastard son of Woody Guthrie, I'm T-Bone Walker" —Robert Hunter                                    |  |  | <b>1:40</b> 🎵 🎧<br><b>Brian Cutean</b><br>Squint yer ears! Hot string band, wordplay, hilarity, and audience precipitation                          |  |
| <b>Caravan Stage</b><br>H3                           |   | <b>11:30</b> 🎵<br><b>George Sadak</b><br>Egyptian drum lesson w/ inspirational rhythms  | <b>12:00</b> 🗣️<br><b>Belly Dance lesson with Claudia!</b><br>An international belly dancer and master teacher shares her deep knowledge of the art form       |  | <b>1:00</b> 🗣️<br><b>The Caravan Stage Belly Dance Show</b><br>Live Middle Eastern music & belly dance: The Bedouin Spice Orchestra & The Caravan Stage Dancers          |   |  |
| <b>Chez Ray's Stage</b><br>K6                        |   |   | <b>12:00</b> 🗣️<br><b>Spoken Word Poetry Showcase</b><br>Every day at Chez Rays, these spoken word poets are ready to break your heart, and heal it open       |  |  | <b>1:30</b> 🗣️<br><b>The Art of Storytelling Smorgasbord</b><br>Featuring truthful stories presented by seasoned storytellers                       |  |
| <b>Community Village Stage</b><br>E5                 |   |   | <b>12:00</b> 🎵<br><b>Eostar &amp; Mathais of Web of One</b><br>Sacred, mystical medicine songs with psychedelic virtuosic guitar jams and inspirational vocals |  |  |   | <b>2:00</b> 🎵<br><b>Percy Hilo, David Rogers, Omo &amp; Jair</b><br>Veteran Villagers united for songs and jams  |
| <b>Dance Pavilion</b><br>N4                          | <b>11:00</b> 🗣️<br><b>Ecstatic Dance with Heather Christie</b><br>A lively Ecstatic Dance journey with Heather Christie & friends: world instruments, voice, and love   |   |  |  | <b>1:00</b> 🗣️<br><b>Julia Chigamba &amp; Chinyakare Ensemble</b><br>Zimbabwean traditional music and dance for all ages   |   | <b>2:00</b> 🗣️<br><b>Bailamos Latin Dance Network</b><br>Put on your dancing shoes and join the fiesta!  |
| <b>Du Caniveaux Vaudeville Palace</b><br>B8          | <b>11:00</b> 🎭<br><b>Bellini Family Circus</b><br>Wild and crazy family circus with dancing tents and chainsaw ballet   |   | <b>12:30</b> 🎭<br><b>Leapin' Louie Goes to War!</b><br>A cowboy circus comedy accompanied by Michelle Alany and The Mystics                                    |  |  |   | <b>2:00</b> 🎭<br><b>The Royal Famille Du Caniveaux</b><br>An epic journey across the Sea in a Sieve—new show in Du Caniveaux Vaudeville Palace           |
| <b>The Front Porch</b><br>I2                         | <b>11:00</b> 🎵<br><b>Jaya Lakshmi</b><br>Kirtan and sacred music  |   | <b>12:30</b> 🗣️<br><b>Laura Stanfill</b><br>A reading from Laura's debut novel, <i>Singing Lessons for the Stylish Canary!</i>                                 |  | <b>1:30</b> 🗣️<br><b>Dreamscapes Academy</b><br>Dreaming is a decolonial praxis—come dialogue around the types of dreaming we find ourselves in                          |   |  |
| <b>Hoarse Chorale Stage</b><br>M8                    |   |   | <b>12:20</b> 🎵<br><b>Alder Street</b><br>Originals inspired by traditional bluegrass and reprises from Iron Maiden to Bill Monroe                              |  |  | <b>1:40</b> 🎵<br><b>Moorea Masa &amp; The Mood</b><br>Emotional vocal performances with lush beds of harmonies and dreamlike textures—with Swatkins |  |
| <b>Kesey Stage</b><br>F4                             | <b>11:00</b> 🎵<br><b>Is Your Farm a Business or a Nonprofit?</b><br>Q&A about legal & tax aspects of farming & how to set your farm up in a way that works best for you |   | <b>12:00</b> 🎵 🎧<br><b>Katie Sontag</b><br>Original transcendental folk that will bring you close to your heart and feel like a big hug                        |  | <b>1:00</b> 🎵 🎧<br><b>OCF Songwriters: Songs of the Naked Soul</b><br>12 OCF singer/songwriters share their lyrics as poetry, in an inspiring musical collaboration      |   |  |
| <b>Main Stage</b><br>D4                              |   | <b>11:30</b> 🎵<br><b>Max Ribner</b><br>Max Ribner and 1st Language invite you to bring your gifts and sing, "Thank You for This Day!!"                                      |  |  | <b>1:00</b> 🎵<br><b>Outer Orbit</b><br>Original burning soul and pocket heavy funk featuring vocalist Sarah Clarke   |   | <b>2:25</b> 🎵<br><b>Weedie Braimah &amp; The Hands of Time</b><br>Master djembe rhythms  |
| <b>Mighty Tiny Puppet Theater</b><br>L7              | <b>11:00</b> 🎭<br><b>Thistleroot Musical Paper Puppet Theater</b><br>Luna and Julia: The story of Julia Butterfly & the redwood tree she lived in for two years         |   | <b>12:00</b> 🎭<br><b>Max</b><br>Dioramas of puppet plays in a walk-by display in front of the Mighty Tiny big top  |  | <b>1:00</b> 🎭<br><b>The Little Mighty Story Box</b><br>PuppetBoy & Big Jacket puppetelling & performing funny business on stage & walking about                          |   | <b>2:00</b> 🎭<br><b>Shae Uisna Puppets/Pelorus Jack</b><br>The Legend of Pelorus Jack, a white dolphin that guided ships through a dangerous pass        |
| <b>Monkey Palace</b><br>L8                           |   | <b>11:30</b> 🎭<br><b>JuggleMania</b><br>Hilarity and dexterity sustainably harvested (may contain nuts)   |  | <b>12:45</b> 🎵<br><b>Kef</b><br>Balkan wedding music, Serbian brass band, 1960s radio-style orchestrations and simple village music                            |  |   | <b>2:00</b> 🎵<br><b>Robin Jackson and The Caravan</b><br>An eclectic NW ensemble get your feet shakin' w/ dreamy folk, soulful jazz, and dusty Americana |
| <b>Morningwood Odditorium</b><br>M6                  |   |   | <b>12:00</b> 🎭 🎧<br><b>Fremont Players and Philharmonic</b><br>Original Musical Panto: The Empress' New Clothes Original                                       |  | <b>1:30</b> 🎵<br><b>Banshee Tree</b><br>Colorado-based Banshee Tree blends traditional swing with modern dance, rock, pop, and indie soul                                |   |  |
| <b>The Rabbit Hole</b><br>I3                         |   | <b>11:30</b> 🗣️<br><b>Laurence Cole &amp; Karly Loveling</b><br>Singing together, nourishing community  |  |  | <b>1:00</b> 🗣️<br><b>David Turner</b><br>Along the Long Tom River: Observations from the past and present  |   | <b>2:00</b> 🎭<br><b>Tom Noddy</b><br>Bubble magic  |
| <b>Spirit Tower</b><br>I5                            | <b>11:00</b> 🗣️<br><b>Sean Ahearn</b><br>History and the mystery of the Oregon Country Fair   |   | <b>12:00</b> 🗣️<br><b>A Witching Hour</b><br>Join Michelle Ruiz-Keil, Tom Hatsis, and friends for a high noon witching hour on Spirit Tower!                   |  | <b>1:00</b> 🗣️<br><b>Nancy Goodman</b><br>Mythic Living, The Heroic Journey: Apply elements of the hero/ine's journey to your daily life!daily life!                     |   | <b>2:00</b> 🗣️<br><b>Kemy Joseph</b><br>Uplifting fusion of motivational music, crowd-sourced freestyles, laughter, good vibes!                          |
| <b>Stage Left</b><br>K6                              |   | <b>11:30</b> 🎭<br><b>Hansel &amp; Regrettal: A Lost Clown Opera</b><br>Follow breadcrumbs to a wayward musical fairyland of perilous acrobatics and nontoxic physical humor |  |  | <b>1:00</b> 🎭<br><b>New Old Time Chautauqua 40+1 Bday Bash!</b><br>The New Old Time Chautauqua's 40+1 Birthday Bash celebrates four decades of hot variety entertainment |   |  |
| <b>W.C. Fields Memorial Stage</b><br>H4              |   | <b>11:30</b> 🎭<br><b>Mud Bay Jugglers with Vendredi's Bag</b><br>A wildly creative and humorous juggling ensemble featuring music, mirth—and lots of surprises!             |  | <b>12:45</b> 🎭<br><b>Jet Black Pearl</b><br>A mad hatter's European party with live looped beats, accordion and flutes   |  |   | <b>2:00</b> 🎭<br><b>Girl Circus</b><br>Coming July 2022...Popcorn! Red carpet! Girl Circus Films presents <i>The Movies!</i>                             |
| <b>Youth Stage</b><br>J3                             |   | <b>11:30</b> 🎵<br><b>Inian Moon</b><br>A PNW indie-folk act writes songs about the magical and mystical complexities of life  |  | <b>12:45</b> 🎭 🎧<br><b>Luna and Julia Puppet Play</b><br>The story of Julia Butterfly who lived in a tree for two years to save a patch of California redwoods |  |   |  |

11:00 11:30 12:00 12:30 1:00 1:30 2:00





# July 10th

Sign Language Interpreted

Music Vaudeville Dance/Movement Spoken Word

| 2:30   | 3:00  | 3:30  | 4:00  | 4:30   | 5:00  | 5:30   | 6:00  |                     |
|--|---|---|---|--|---|--|---|---------------------|
|  | <b>3:00</b><br><b>Sweet N' Juicy</b><br>A banana named Sweet, a pineapple named N', and a strawberry named Juicy make you dance |   |   | <b>4:20</b><br><b>Handmade Moments</b><br>Dip into the sacred well of American music: jazz, old-time country, blues, soul, rock, and hip hop       |   |  | <b>5:50</b><br><b>Caitlin Jemma</b><br>Singer songwriter with a celestial new disco-folk album  | Blue Moon           |
|  |   | <b>3:30</b><br><b>Espacio Flamenco</b><br>A delightful ensemble of flamenco musicians & dancers present this powerful art from Southern Spain |   |  | <b>5:00</b><br><b>The Caravan Stage Belly Dance Show</b><br>Live Middle Eastern music & belly dance: The Bedouin Spice Orchestra & The Caravan Stage Dancers        |  |   | Caravan             |
| <b>2:30</b><br><b>Eugene Comedy Crescendo</b><br>Fun, laughter, and good times as we present professional stand-up comedy from top local comedians           |   |   |   |  |   |  |   | Chez Ray's          |
|  |   |   | <b>4:00</b><br><b>The Muddy Souls</b><br>High-energy Northwest bluegrass, with extended improvisation, sure to get you on your feet!  |  |   |  | <b>6:00</b><br><b>The Macks</b><br>Blues & jazz influenced Portland/Eugene rock band released their third album, Rabbit, this year                    | Community Village   |
|  |   |   | <b>4:00</b><br><b>Kay Jeweler</b><br>DJ duo and partners! Enjoy a soulful, house, R&B, dancing good time for everyone!  |  |   | <b>5:30</b><br><b>Paul Deering and Heather Christie</b><br>Dance warm-up   | <b>6:00</b><br><b>Fair Thee Well Ecstatic Dance: DJ Shawn</b><br>DJ Shawn takes dancers on a journey of the soul, collecting joy through movement     | Dance Pavilion      |
|  |   | <b>3:30</b><br><b>JuggleMania &amp; Co(defendants)</b><br>If variety is the spice of life, JuggleMania is the wasabi                          |   |  | <b>5:00</b><br><b>Bellini Family Circus</b><br>Wild and crazy family circus with dancing tents and chainsaw ballet  |  | <b>6:30</b><br><b>The Royal Famille Du Caniveaux</b><br>The Sea in a Sieve  | Du Caniveaux Palace |
| <b>2:30</b><br><b>Michelle Ruiz-Keil</b><br>Portland author reads from her novel <i>All of Us with Wings</i> —including the scene set here at OCF            |   | <b>3:30</b><br><b>Tom Hatsis</b><br>Psychedelic witchcraft in history and practice  |   | <b>4:30</b><br><b>Rainbow Drag Show</b><br>Come one, come all to celebrate the art of drag and the Fair's LGBTQ+ community                         |   |  | <b>6:00</b><br><b>Evan Greer</b><br>High-energy acoustic songs that inspire hope, build community, and incite resistance!                             | Front Porch         |
|  | <b>3:00</b><br><b>Rizo</b><br>High priestess of cabaret   |   |   | <b>4:20</b><br><b>Alcyon Massive</b><br>Devoted to 'dream the world awake' with spiritual lyrics and blend of hip-hop meets reggae                 |   |  | <b>5:50</b><br><b>The California Honeydrops</b><br>Bay Area R&B, funk, soul, Delta blues, and New Orleans second-line—vibrant energy dance party!     | Hearse Clovale      |
|  |   | <b>3:15</b><br><b>Baroque Betty</b><br>Minimalist soul folk singer shares her quirky, darker side of music                                    |   | <b>4:00</b><br><b>Trevor Bahnsen</b><br>New Mexican indie folk musician  | <b>5:00</b><br><b>Michael Mowgli and Friends</b><br>Alternative love rock artist and founding member of The Mowglis, opens Bernie Sanders gigs too                  |  | <b>6:00</b><br><b>Buckman Coe</b><br>Conscious roots/soul psy-world activist artist... Voted W. Canada's 2019 World Artist of the Year                | Keesey Stage        |
|  |   |   | <b>4:00</b><br><b>DeVotchKa</b><br>DeVotchKa's eclectic style blends alt-rock with cabaret music, Eastern European folk and punk  |  |   |  | <b>5:40</b><br><b>Tribute to Robert Hunter</b><br>Melvin Seals, Scott Law, Lebo, Ross James, and Alex Koford play tunes by the Dead's best songwriter | Main Stage          |
|  |   |   | <b>4:00</b><br><b>Sing out! with Dreamscape Theater</b><br>Join puppets Abby & Arnie to sing some of your favorite classic songs with the help of some special guests and friends |  |   |  |   | Mighty Tiny Theater |
|  |   | <b>3:15</b><br><b>Grupo Masato</b><br>Latin dance music blending Andean melodies on surf guitars over Cumbia rhythms with soaring vocals      |   | <b>4:30</b><br><b>The Saloon Ensemble</b><br>A bottomless bucket of ear-poppin' originals and twisted pop hits performed with wild and crazy flare |   |  | <b>6:00</b><br><b>Solovox</b><br>Blurring musician & DJ, live compositions of future-funk, electro-house, and downtempo                               | Monkey Palace       |
|  | <b>3:00</b><br><b>Fremont Players and Philharmonic</b><br>Original Musical Panto: The Empress' New Clothes Original             |   |   | <b>4:30</b><br><b>Llorona</b><br>Love, loss, truth, and dreams at the crossroads of traditional Mexican and contemporary styles                    |   |  | <b>6:00</b><br><b>Glitterfox</b><br>Indiefolk awesomeness illuminating the edges of tender love through a ragged storyline                            | Morningwd           |
|  | <b>3:00</b><br><b>DanceSafe</b><br>Meeting people where they're at: harm reduction in practice                                  |   | <b>4:00</b><br><b>Lars Adams</b><br>Clown around with Lars Adams at Rabbit Hole!  |  | <b>5:00</b><br><b>Fooble the Dragon</b><br>A puppet show delighting audiences of all ages with stories and song!  |  |   | Rabbit Hole         |
|  | <b>3:00</b><br><b>Dr. Atomic</b><br>Poking fun at what needs to be poked with spoken word, music, and drama                     |   | <b>4:00</b><br><b>Arami Walker</b><br>R&B, soul, hip hop, world arts & culture, and spoken word   |  |   | <b>5:30</b><br><b>The CelloJoe Show with Amazing Friends</b>   |   | Spirit Tower        |
| <b>2:30</b><br><b>New Old Time Chautauqua Workshops</b><br>Learn to juggle, hula hoop/kumihimo/spontaneous storytelling/quilting/magic/doctrine of discovery |   |   | <b>4:00</b><br><b>Hansel &amp; Regrettal: A Lost Clown Opera</b><br>Follow breadcrumbs to a wayward musical fairyland of perilous acrobatics and nontoxic physical humor          |  | <b>5:15</b><br><b>Shoehorn's Hatband Vaudeville Cabaret</b><br>Shoehorn's Hatband will provide a lively soundtrack to invited artistes from the Oregon Country Fair |  |   | Stage Left          |
|  |   | <b>3:45</b><br><b>UMO Ensemble</b><br>A ship of fools, hanging from the rigging and singing to the moon, searching for...                     |   |  | <b>5:15</b><br><b>Rose City Circus</b><br>Returning to the Oregon Country Fair with a high flying acrobatic circus  |  |   | W.C. Fields         |
| <b>2:30</b><br><b>Giant Puppets Save the World</b><br>A story about how a few small puppets think big and work together to make the world better with art    |   |   | <b>4:00</b><br><b>Moes Family Band</b><br>The Moes Family Band plays woke folk with soaring harmonies and quirky humor to delight and amuse                                       |  |   | <b>5:30</b><br><b>Miles Gracen</b><br>Miles Gracen's original songs and covers will bring diverse genres into soothing guitar and vocals |   | Youth Stage         |
| 2:30   | 3:00  | 3:30  | 4:00  | 4:30   | 5:00  | 5:30   | 6:00  |                     |



# XAVANADU

## Hop Aboard the 2022 StewardShip!

Located in Xavanadu, the OCF StewardShip highlights a series of entertaining and interactive presentations showcasing the Fair's sustainability efforts. At StewardShip, you can learn about the Fair's environmental programs and leadership for more than 50 years or craft handmade paper at a recycled art workshop. You won't want to miss EarthCapades as they blend comedy, music, juggling, storytelling, theatrics, and circus antics that demonstrate how saving the planet can be FUN!

## Win a Pair of 2023 Fair Passes at StewardShip!

Be sure to participate in the Passport Scavenger Hunt for your chance to win our grand prize of a pair of three-day OCF 2023 tickets with Zumwalt camping passes! Join us for a fun-filled journey exploring the OCF lands with your very own passport in hand! Travel documents are available for pickup at the booth in Xavanadu and at Passport stations located throughout the Fair. Limited supply – first come, first serve. The grand prize drawing is Sunday at 5:00!



© Jeremy Running

## Xavanadu Photo Frame

Visit our Selfie Photo Frame near StewardShip and post your photos to #XAVANADU.

## Xavanadu Art Program

Xavanadu's art focuses upon reflection and re-connection.

*Drums beat the rhythm of the human race  
It's the only reflections of your own face  
Now you are ready to come on by  
just remember not to ask the question why  
as you gaze out into space  
Feel the magic of this place.*

~B Nershi.

Portal Arts Collective asks that we all slow it down to a snail's pace inside of **Shelly**, a modern mollusk made with repurposed products in novel ways. Search for a dark nook to find James Sartor and Justin Kittell's crystal ball-controlled **Kaleidoscope**. Back by popular demand, Lilli Safranski's **Stoecheia** dazzles fairgoers with its classic iconography and ethereal lighting.

Wes Shafer's **The Faster We Go The Rounder We Get** is an oversized psychedelic acrylic pour that never ends. **Dream 13** by artist and "Mathscaper" Rob Leonard expresses the beauty of mathematics and physics for all through art. Whether you are allergic to math or a pedigreed mathematician, come contemplate the beauty of both nature and number. The shimmering scales and smoky breath of the **Singing Serpent** come alive with community voices in this artwork by Julia Andalora and Brandon Shaw.

Nao Yamamoto helps us embrace each and every element of ourselves with **Broken Self-Esteem**. Created by Sasha Vu & Ira Hyder, **The Enchanter** creates the illusion of endless space, a portal to beyond the veil. Tyler Fuqua Creations brings another invigorating installation. Come flex your Flower Power at the **Flower Tower**!



© Aaron Blake

## Teen Artists Unite & Jam On

Just a few weeks after the Country Fair, a special event takes place: Culture Jam! It happens on a portion of the Fair site called Alice's Wonderland. For eight fun-filled days, up to fifty-five youth ages 14-18 come together with an inspired staff of artists, performers, naturalists and social revolutionaries to change the world! For more information, call 541.203.0296.



© Peter Raducha



© Jay Manansala



© Benjamin Ammon



# Ambiance on the Path

## Ambiance Entertainment on the Paths

Our mission is to produce unique performances and experiences on the paths of the Fair, offering the public and family inspiring moments of magic, wonder, and delight. This year our theme is Healing Through Play. Our artists offer joyful connections and playful interactions to help soothe our souls and heal our hearts from our collective experience over the last two years.

### Dragon Plaza Opening Performances:

Friday, Saturday, Sunday - 11:00 & 1:00

As you embark on your journey through Fair, Ambiance Performers fill the plaza with a collage of fantastical feats, captivating characters, mystery, magic, and music. The spectacle invites you to look around, fill your senses, and step readily into an alternate reality of awe and wonder. The adventure has begun!



## Featured Acts:

### Calliope Circus

Dare to Be Here! - Fantastical Beings Defy Imagination, Challenge Sensibility, Engage the Reluctant-Opening heart.

### Primordial Soup Puppets

Nautical Nonsense! Come swim the maritime merriment wave.

### Catz Meow!

Frisky antics & catnip capers. Come frolic in the glitter box with the AristoCatz.

## Full Line Up:

### Chicken Little

OCF's imaginative, unpredictable stilt-performance troupe trying something different since 1979.

### Peachi the Dragon Parade

Everyone is welcome to join Peachi the Dragon's Parade! Come experience the Magic of the Dragon!

### Mystics of Nibiru

Brass & percussion, dancers & acrobats! Quixotic energies & kinesthetic vibrations.

### Risk of Change

Risk of Change breathes magic into our wacky and poignant characters & wild parades for all to join.

### Diva Galactika

Beloved performance troupe stilt dancing on the edge of danger with captivating beauty and daring.



### Revelers Aerial Works

Aerial performers weaving through space in gravity-defying feats of strength & flexibility.

### Snow, Living Statue

Snow, Living Statue is a quiet island of motionless monochromatic magic amidst the color and chaos.

### Statue Cru!

Statue Cru may LOOK stationary, but they are moving through what it means to be human every MOMENT.

### Coyote Rising Giant Puppets

Interactive, playful, larger than life beings.

### Little Bo Peep and the Nonconforming Sheep

Little Bo Peep needs your help herding her flock of fabulously individual Nonconforming Sheep!

### The Curiosity

Contortionists who aim to inspire movement and encourage the question: "What isn't possible?"

### Jonny Hahn

Pianist/singer/songwriter: Rockin', mesmerizing all original political path piano.

### The Radar Angels

Fringe meets the Future as the Dazzling Radar Angels boogie from the Roaring 20's to the Four 20's!

### Last Gasp Sweep Band

The Fair's not over til the Sweep Band plays.



# Woodland Workshops, Presentations & Gatherings

|                     | ARCHAEOLOGY PARK (B8)  | COMMUNITY VILLAGE (E5)  |  |  |  |
|---------------------|--|---|--|--|--|
|                     | Ongoing flint knapping demos, hands-on friction fire starting & hide tanning and archaeological display happen all day, every day.   | Yurt  | Village Green  | Dome   | Community House  |
| FRIDAY * JULY 8TH   | 11:00 <ul style="list-style-type: none"><li>Natural pigment paints (Carole Mathewson)</li><li>Wool work with natural dyes</li></ul>  | Journey to the Center of Self!<br>Join life coach and counselor Ben Luskin on a deep dive in self love  | Frog's joke workshop for kids  |  | Ask a Master Gardener<br>Mobile plant clinic & plant display (Jacob Weinstein) |
|                     | 12:00 <ul style="list-style-type: none"><li>Hide tanning (Woniya Thiebault)</li><li>Weave a Basket with Local Materials</li></ul>  | Women's grounding circle  |  | Maiden Ritual:<br>Rites of Passage for Maidens<br>Coming of Age (Heather Greene)                 |  |
|                     | 1:00 <ul style="list-style-type: none"><li>Leg rolling cordage, nets, and natural fibers (Tamara Wilder)</li><li>Weave a basket with local materials</li></ul>   | Narcotics Anonymous open meeting  | Dances of Universal Peace<br>Join in on a dance for peace  | Dying for Dummies<br>Hospice 101 with Registered Nurse Stephanie Ballman                         |  |
|                     | 2:00 <ul style="list-style-type: none"><li>Shell bead making (Ed Willie)</li><li>Hide tanning (Issa Sava-Sturm)</li><li>Weave a basket with local materials</li></ul>                                  |   |  |  |  |
|                     | 3:00 <ul style="list-style-type: none"><li>Bone tool samples and discussion (Peter Bauer)</li><li>Hide tanning (Matt Richards)</li></ul>   | Heart of Now (Lisa Stein)   | Conscious Connections (Lisa Stein)   | Help Pollinators for Healthy Food! (Jen Hornaday)  |  |
|                     | 4:00Natural pigment paints (Carole Mathewson)  |   |  | Open Heart Meditation (Kendra Vita and Benjamin Wilkinson)                                       |  |
|                     | 5:00Open workshops and demonstrations  |   | Mindfreedom Presents: Activists in Mental Health Open Forum Discussion (Chrissy Peirsol)         |  |  |
|                     | 6:00   |   |  |  |  |
| SATURDAY + JULY 9TH | 11:00 <ul style="list-style-type: none"><li>Natural pigment paints (Carole Mathewson)</li><li>Leg rolling cordage, net making demonstration (Tamara Wilder)</li></ul>                                  | Journey to the Center of Self!<br>Join life coach and counselor Ben Luskin on a deep dive in self love  | Frog's joke workshop for kids  |  | Ask a Master Gardener<br>Mobile plant clinic & plant display (Jacob Weinstein) |
|                     | 12:00 <ul style="list-style-type: none"><li>Weave a basket with local materials</li><li>Hide tanning (Woniya Thiebault)</li></ul>  | Women's grounding circle  |  | Mother Ritual:<br>Rites of Passage for Mothers (Heather Greene)                                  |  |
|                     | 1:00 <ul style="list-style-type: none"><li>Shell bead making (Ed Willie)</li><li>Hide tanning (Matt Richards)</li><li>Weave a basket with local materials</li></ul>                                    | Narcotics Anonymous open meeting  | Dances of Universal Peace<br>Join in on a dance for peace  | Positive Community Kitchen:<br>Delivering hope through volunteer farming, food prep & deliveries |  |
|                     | 2:00 <ul style="list-style-type: none"><li>Hide tanning (Issa Sava-Sturm)</li><li>Water bottle net workshop [2 hrs] (Tamara Wilder)</li><li>Weave a basket with local materials</li></ul>              | Navigating conflict in community:<br>Utilizing conflict for growth and greater harmony (Plaedo Wellman) |  |  |  |
|                     | 3:00Bone tool samples and discussion (Peter Bauer)   | Heart of Now (Lisa Stein)   |  |  |  |
|                     | 4:00Natural pigment paints (Carole Mathewson)  | Introduction to Therapeutic Touch (Cory Anderson)   |  | Open Heart Meditation (Kendra Vita and Benjamin Wilkinson)                                       |  |
|                     | 5:00Bone tool making (Peter Bauer)   |   | Mindfreedom Presents: Activists in Mental Health Open Forum Discussion (Chrissy Peirsol)         |  |  |
|                     | 6:00Open workshops and demonstrations  | All-Levels Hatha Yoga<br>Connecting movement to breath awareness (Denny Richard)                        |  |  |  |
| SUNDAY * JULY 10TH  | 11:00 <ul style="list-style-type: none"><li>Natural pigment paints (Carole Mathewson)</li><li>Leg rolling cordage, net making demonstration (Tamara Wilder)</li></ul>                                  | Mindfulness meditation for kids (Rose Orion)  |  |  | Ask a Master Gardener<br>Mobile plant clinic & plant display (Jacob Weinstein) |
|                     | 12:00 <ul style="list-style-type: none"><li>Hide tanning (Woniya Thiebault)</li><li>Bone tool making (Peter Bauer)</li><li>Weave a basket with local materials</li></ul>                               | Women's grounding circle  |  | Crone ritual: Rites of passage to honor our crones (Heather Greene)                              |  |
|                     | 1:00 <ul style="list-style-type: none"><li>Hide tanning (Matt Richards)</li><li>Oregon grape harvest &amp; processing [2+ hrs] (Issa Sava-Sturm)</li><li>Weave a basket with local materials</li></ul> | Narcotics Anonymous open meeting  | Dances of Universal Peace<br>Join in on a dance for peace  | Metadesigning Media (Jair)   |  |
|                     | 2:00 <ul style="list-style-type: none"><li>Water bottle net workshop [2 hrs] (Tamara Wilder)</li><li>Shell bead making (Ed Willie)</li><li>Weave a basket with local materials</li></ul>               |   |  |  |  |
|                     | 3:00Natural pigment paints (Carole Mathewson)  | Heart of Now (Lisa Stein)   | Positive Community Kitchen:<br>Delivering hope through volunteer farming, food prep & deliveries | Help Pollinators for Healthy Food! (Jen Hornaday)  |  |
|                     | 4:00Open workshops and demonstrations  | Introduction to Therapeutic Touch (Cory Anderson)   |  | Open Heart Meditation (Kendra Vita and Benjamin Wilkinson)                                       |  |
|                     | 5:00   |   |  |  |  |
|                     | 6:00   |   |  |  |  |



| XAVANADU (L5)  |  |  |  |       |
|--|--|--|--|-------|
| StewardShip A  | StewardShip B  | Flow Zone  | Dance Pavilion   |       |
|  |  | Join the Flow Zone Circus Crew!<br>Toys for everyone! Learn, play, explore –<br>All days, all hours! | Bette Plass: Adaptive yoga for everyone Utilize chair, mat, or wheelchair to stretch, strengthen and move w/ more ease | 11:00 |
| Join Tom Gannon for a discussion of<br>“50 Years of OCF Sustainability”  | Paper Making Art Workshop:<br>Make Your Own Paper from Recycled Peach Pits | Passionflower<br>Afro-melodic grooves sung through metal, wood, larynx, string, and hyde             | (12:30) It's all fun and movement games with Amaya and Robin – Guided improv movement games                            | 12:00 |
| Earthcapades Environmental Vaudeville presents:<br>“The Waste Reduction Production”  |  | Join the Flow Zone Circus Crew!<br>Toys for everyone! Learn, play, explore –<br>All days, all hours! | DJ Prashant & the Jai Ho! Dance Troupe Teleport to a Bollywood musical at this synchronized interactive dance party!   | 1:00  |
| OCF Sustainability Non-Trivial Pursuit:<br>Answer questions about OCF's environmental programs for your chance to win a prize! |  |  | (3:15) Hoop Fun-damentals! –<br>Learn the fun-damentals of hoop dance w/ Bright Heart Circus. Ages 2-102!              | 2:00  |
| Join John Alexander for a discussion of<br>“Why Care About Birds?<br>Birds of the Long Tom and OCF Conservation”               |  |  |  | 3:00  |
| Join David Turner for a discussion of<br>“Along the Long Tom River: Observations from the Past and Present”                    |  |  | (4:15) Zimbabwean traditional music and dance performed by Julia Chigamba and Chinyakare Ensemble                      | 4:00  |
| Join Glenn Johnson for a discussion of<br>“Wildlife and Habitat Stewardship at the Oregon Country Fair Site”                   |  |  | (5:30) Manoj<br>Deep, tribal, ethnic, and progressive house music dance party  | 5:00  |
|  |  | DJ Global Ruckus<br>Trans-global groove maniac provides cross-cultural dance floor mashups           |  | 6:00  |
|  |  | Join the Flow Zone Circus Crew!<br>Toys for everyone! Learn, play, explore –<br>All days, all hours! | Bette Plass: Adaptive yoga for everyone Utilize chair, mat, or wheelchair to stretch, strengthen and move w/ more ease | 11:00 |
| Join Tom Gannon for a discussion of<br>“50 Years of OCF Sustainability”  | Paper Making Art Workshop:<br>Make Your Own Paper from Recycled Peach Pits |  | Inside and Out: Movement Improv –<br>Amaya & Alison guide you to explore your authentic movement                       | 12:00 |
| Earthcapades Environmental Vaudeville presents:<br>“The Waste Reduction Production”  |  | Passionflower<br>Afro-melodic grooves sung through metal, wood, larynx, string, and hyde             | (1:15) Zimbabwean traditional music and dance performed by Julia Chigamba and Chinyakare Ensemble                      | 1:00  |
| OCF Sustainability Non-Trivial Pursuit:<br>Answer questions about OCF's environmental programs for your chance to win a prize! |  | Join the Flow Zone Circus Crew!<br>Toys for everyone! Learn, play, explore –<br>All days, all hours! | (2:15) DJ Prashant & the Jai Ho! Troupe Teleport to a Bollywood musical at this synchronized interactive dance party!  | 2:00  |
| Join John Alexander for a discussion of<br>“Why Care About Birds?<br>Birds of the Long Tom and OCF Conservation”               |  |  | (3:15) Hoop Fun-damentals! –<br>Learn the fun-damentals of hoop dance w/ Bright Heart Circus. Ages 2-102!              | 3:00  |
| Join Dennis Todd for a discussion of<br>“History of Land Management at the Oregon Country Fair Site”                           |  |  | (3:30) Ecstatic dance w/ Scott Nice – Prayerful dance music w/ afro latin roots that moves the body and feeds the soul | 4:00  |
| Join Glenn Johnson for a discussion of<br>“Wildlife and Habitat Stewardship at the Oregon Country Fair Site”                   |  |  | (5:30) Miles Maeda –<br>Healing dance music vibes for the body, mind, and spirit                                       | 5:00  |
|  |  | DJ Global Ruckus<br>Trans-global groove maniac provides cross-cultural dance floor mashups           |  | 6:00  |
|  |  | Join the Flow Zone Circus Crew!<br>Toys for everyone! Learn, play, explore –<br>All days, all hours! | A lively Ecstatic Dance journey with Heather Christie & friends – world instruments, voice, and love                   | 11:00 |
| Join Tom Gannon for a discussion of<br>“50 Years of OCF Sustainability”  | Paper Making Art Workshop:<br>Make Your Own Paper from Recycled Peach Pits |  |  | 12:00 |
| Earthcapades Environmental Vaudeville presents:<br>“The Waste Reduction Production”  |  |  | Zimbabwean traditional music and dance for all ages performed by Julia Chigamba & Chinyakare Ensemble                  | 1:00  |
| OCF Sustainability Non-Trivial Pursuit:<br>Answer questions about OCF's environmental programs for your chance to win a prize! |  | (2:30) Passionflower<br>Afro-melodic grooves sung through metal, wood, larynx, string, and hyde      | Bailamos Latin Dance Network<br>Put on your dancing shoes and join the fiesta!   | 2:00  |
| Join Dennis Todd for a discussion of<br>“History of Land Management at the Oregon Country Fair Site”                           |  | Join the Flow Zone Circus Crew!<br>Toys for everyone! Learn, play, explore –<br>All days, all hours! |  | 3:00  |
| Join David Turner for a discussion of<br>“Along the Long Tom River: Observations from the Past and Present”                    |  |  | Kay Jeweler  | 4:00  |
| Passport grand prize drawing   |  |  | (5:30) Paul Deering and Heather Christie We gather to explore the range of ourselves in the company of others          | 5:00  |
|  |  | DJ Global Ruckus<br>Trans-global groove maniac provides cross-cultural dance floor mashups           | Fair Thee Well Ecstatic Dance<br>DJ Shawn takes dancers on a journey of the soul, collecting joy through movement      | 6:00  |



# Feed Your Hunger. Quench Your Thirst

## Food & Drink

| Booth Name (Booth #)                 | Map Location | Vegetarian Options | Vegan Options | Gluten-Free Options | All Vegetarian | All Vegan | All Gluten-Free |
|--------------------------------------|--------------|--------------------|---------------|---------------------|----------------|-----------|-----------------|
| Afghani Cuisine (L64)                | K5           | ◆                  |               |                     |                |           | ◆               |
| Bangkok Grill (X28)                  | N4           | ◆                  |               |                     |                |           |                 |
| Blazing Salads (329)                 | B5           |                    | ◆             | ◆                   | ◆              |           |                 |
| Blintz Booth (131)                   | F4           | ◆                  |               |                     |                |           |                 |
| Buddha Chocolate (Strolling)         |              |                    |               | ◆                   |                | ◆         |                 |
| Cafe 26 (320)                        | B5           | ◆                  |               | ◆                   |                |           |                 |
| Cafe Lafayette (X24)                 | N4           |                    |               |                     |                |           |                 |
| Cafe Mam (196)                       | E5           |                    | ◆             |                     | ◆              |           | ◆               |
| Casablanca (M52)                     | L6           | ◆                  |               |                     |                |           |                 |
| Celestial Snacks (328)               | B5           | ◆                  |               | ◆                   |                |           |                 |
| Clayton's Candies (Strolling)        |              |                    |               | ◆                   | ◆              |           |                 |
| Cooperative Fruit (182)              | E6           |                    |               |                     |                | ◆         |                 |
| Dan's Original Burgers (53)          | H4           |                    |               |                     |                |           |                 |
| Deep Sea Delights (M47)              | M6           |                    |               | ◆                   |                |           |                 |
| Dessert Oasis (Strolling)            |              |                    |               |                     | ◆              |           | ◆               |
| Divine Balance Fruit Salad (235)     | D5           |                    |               |                     | ◆              |           | ◆               |
| Divine Cupcake (X23)                 | M4           |                    |               | ◆                   | ◆              |           |                 |
| Brew Dr. Kombucha (Strolling)        |              |                    |               |                     | ◆              |           | ◆               |
| El Burrito Shop (282)                | C5           | ◆                  |               |                     |                |           |                 |
| Elegant Elephant (Strolling)         |              | ◆                  | ◆             |                     |                |           | ◆               |
| Fresh Squeeze (Strolling)            |              |                    |               |                     | ◆              |           | ◆               |
| Genesis Juice (Strolling)            |              |                    |               | ◆                   | ◆              |           | ◆               |
| Get Fried (327)                      | B5           | ◆                  |               |                     |                |           |                 |
| Gourmet Lemonade, The (193)          | E5           |                    |               |                     | ◆              |           | ◆               |
| Great Falafel (310)                  | B5           |                    |               | ◆                   |                |           |                 |
| Gritz La Ritz (L41)                  | K6           | ◆                  |               |                     |                |           |                 |
| Hemp House Grill (400)               | B7           | ◆                  |               | ◆                   |                |           |                 |
| Herbal Junction (X25)                | M4           | ◆                  | ◆             | ◆                   |                |           |                 |
| Hilltop Bakery (P11)                 | A5           |                    | ◆             | ◆                   | ◆              |           |                 |
| Just Desserts By Rosie (18)          | H3           |                    |               |                     |                |           |                 |
| Knish Bliss (M51)                    | L6           |                    |               |                     | ◆              |           |                 |
| Kundari's Pizza (211)                | D5           | ◆                  |               |                     |                |           |                 |
| La Tortilla (W00)                    | A5           | ◆                  |               |                     |                |           |                 |
| Le Petit Gourmet (Strolling)         |              |                    |               | ◆                   | ◆              |           |                 |
| Lovin Oven (772)                     | F5           | ◆                  |               |                     |                |           |                 |
| Mainstage Smoothies (252)            | C5           |                    |               | ◆                   | ◆              |           |                 |
| Mario Bros LLC (133)                 | F5           | ◆                  |               |                     |                |           |                 |
| Mickeys Louisiana Gumbo (340)        | B5           |                    |               |                     |                |           |                 |
| Monster Cookie Co (Strolling)        |              |                    |               |                     | ◆              |           |                 |
| Old Fashioned Fudge (W04)            | A5           |                    | ◆             | ◆                   | ◆              |           |                 |
| Phoenix Rising (11)                  | I3           |                    |               |                     | ◆              |           |                 |
| Pizza Co (326)                       | B5           | ◆                  |               |                     |                |           |                 |
| Raw (X20)                            | M4           |                    |               |                     | ◆              |           | ◆               |
| Rising Moon (L56)                    | K5           | ◆                  |               |                     |                |           |                 |
| Ritta's Burritos (L00)               | J5           | ◆                  | ◆             | ◆                   |                |           |                 |
| Roll On Egg Rolls (152)              | F5           | ◆                  |               |                     |                |           |                 |
| Sonny's India House (126)            | F4           | ◆                  | ◆             | ◆                   |                |           |                 |
| Soy World's Vegan Truck Stop (290)   | C5           |                    |               |                     | ◆              |           |                 |
| Springfield Creamery (125)           | F4           |                    | ◆             |                     | ◆              |           | ◆               |
| Stefano's Souvlaki (850)             | H5           | ◆                  |               |                     |                |           |                 |
| Stir Fried (P00)                     | B5           | ◆                  |               |                     |                |           |                 |
| The Cannery (X50)                    | L6           | ◆                  |               |                     |                |           |                 |
| The Hundredth Munchy (Strolling)     |              |                    |               |                     | ◆              |           |                 |
| The Mac (X48)                        | M6           | ◆                  |               |                     |                |           |                 |
| Valentine's Coffee (M35)             | L7           |                    | ◆             |                     | ◆              |           | ◆               |
| Veggie Heaven (23)                   | H3           |                    |               |                     | ◆              |           |                 |
| Viva Vegetarian Grill (X26)          | N4           |                    |               | ◆                   |                |           |                 |
| White Bird's Cleveland Chicken (916) | I5           |                    |               | ◆                   |                |           |                 |
| Whole Enchilada (148)                | F5           | ◆                  |               |                     |                |           |                 |
| Wild Berry (315)                     | B5           |                    |               | ◆                   |                |           |                 |

*Complete artisan directory can be found at all Info Booths.*







## Hear our Community's power on Spoken Word Stages!

Spoken Word invites you to visit our four stages spread throughout the Fair: Spirit Tower, Front Porch, Rabbit Hole, and Chez Ray's. We have an incredible lineup of speakers this year. Our topics range from racial and reproductive justice, to witches and the Long Tom River, bringing together a host of big thinkers and doers to share with us what we don't know we wish we knew!

This year, our author highlights include Portland authors Michelle Ruiz Keil and Laura Stanfill. It is also a thrill to have trans/genderqueer activist and folk-punk icon Evan Greer on our lineup.

Join DanceSafe for programming on consent, community safety, and the history of the war on people who use drugs. Tune into our Words of Power Panel to learn about reclaiming slurs to resist institutionalized oppression. Participate in stage takeovers from the Fair's new BIPOC Sanctuary and Rainbow Connection booths as well as a big Sunday drag show—and more!

On Saturday, we are scheduling reproductive justice events to resist forced birth in solidarity with Planned Parenthood protests across the country on that day. Join us for a rally at Spirit Tower. Connect with others doing this essential work—we are not alone!

Chez Ray's is a pinwheel of showcases—poetry, storytelling, and stand up comedy in an intimate, shady setting. Come have your heart blown open and laugh until you cry at this very special little stage.

And that's not all! Everyone at Spoken Word can't wait to see you again.



## 2022 poster Artist

Emily Poole ([www.epooleart.com](http://www.epooleart.com), @epooleart) is a natural history illustrator, raised in the Rockies and now rooted in the mossy hills of Eugene. She received her BFA in Illustration from the Rhode Island School of Design in 2016 and has created work for numerous organizations including the National Museum of Wildlife Art, Mt. Pisgah Arboretum, Sasquatch Books, and High Country News. Emily creates images with the goal of inspiring and educating about the natural world and what we can do to be better stewards of the land. Her inspiration for the 2022 Oregon Country Fair poster came in the form of bear scat she encountered on the Fair grounds during an off-season wander. In considering the cyclical sharing of the space between human and non-human species over the course of a year, she wanted to create a design that spoke to the gifts of

stewardship and renewal that all the communities on the site (plant, animal, and human) give to each other. The design was created in 2018 with the intention of unveiling it in 2020, and the events that have passed since have transformed the concept of the poster into something more for this year—the bear bringing the Fair out of a long hibernation, returning the site to Fairgoers for the first time after a period of quiet and restorative growth.

*Do you want an opportunity to design a poster for an upcoming Fair? Please share some samples of your work or a link to your portfolio. For more details and an extensive gallery of past Fair posters, visit [oregoncountryfairposter.com](http://oregoncountryfairposter.com).*





# Philanthropic Phairies

The Fair has been rooted in philanthropy since it began as a fundraiser for a children's program. Our philanthropy is focused on building community and helping people thrive.

We have three grantmaking programs that together have donated more than \$1.5 million: The Bill Wooten Endowment Fund, the Jill Heiman Vision Fund and Board of Directors donations. To learn more, wander over to Wally's Way to visit the Galleria Philanthropia booth or visit [oregoncountryfair.org](http://oregoncountryfair.org).

## Jill Heiman Vision Fund

Four nonprofits that help meet people's basic needs will receive the donations made to the Jill Heiman Vision Fund at this year's Fair:

- **Mid Lane Cares' Emergency Assistance** program serves vulnerable residents in the Fern Ridge area. The Emergency Fund provides help with rent and utility bills to prevent homelessness, bus passes for access to services, and other emergency needs.
- **Looking Glass** will help finance renovations to a new home in the Rural Program in Cottage Grove. The new home will allow Looking Glass to expand services to at-risk youth between the ages of 11 and 21 throughout Southeast Lane County.
- **Hope & Safety Alliance** (formerly WomenSpace) will install a new roof on Jamie's House, a new emergency shelter that can house up to 22 individuals.
- **Community Supported Shelters** will purchase basic essentials to help clients get through the winter, including warm clothing, cough drops, tissues, prescriptions, warm food, and sleeping bags.



Look for donation boxes at Information Booths around the Fair. Cash, checks, or food vouchers may be donated. Checks and cash donations are tax-deductible; please include address for mailed receipt. The OCF Board will triple the power of your gift by matching every \$1 donated with \$2, up to a total of \$25,000.

## Bill Wooten Endowment Fund

The Bill Wooten Endowment Fund awarded a total of \$29,000 to support nonprofit organizations serving youth in the Fair's neighboring communities in the Fern Ridge area. The grants tangibly represent the Fair's deep appreciation of our home community. During the pandemic, the Endowment had two funding cycles: a special cycle supporting organizations addressing the impact of the pandemic on Fern Ridge area youth, and our regular funding cycle.



## Pandemic-Impact Funding:

- **Fern Ridge Middle School:** A "break space" was created and staffed to help identify students develop coping strategies for controlling frustrations after a year away from the classroom.
- **Lane Arts Council:** The Fern Ridge Library brought three artists to work with 5- to 10-year olds in exploring puppetry and watercolor painting.
- **Rural Art Center:** Resumption of the launch for a Crow-Applegate-Lorane school district-wide African-American Cultural History project delayed by the pandemic.
- **Veneta Elementary School:** A professional musician taught students school-wide to perform a Cajun fiddle tune and musically illustrate a short folk story.
- **Wordcrafters:** A spoken word/creative writing artist residency helped Elmira High School students make meaning of the challenges they are facing during the pandemic.

## Annual Endowment Funding:

- **Culture Jam:** Fern Ridge area youth received scholarships to attend this eight-day arts-based empowerment camp for teenagers held each summer at the Fair site.
- **Elmira Elementary School:** An artist-in-residence helped students create their own flags after studying other cultures' use of fiber arts to enhance their communities.
- **Fern Ridge Middle School:** The school purchased additional band instruments, enabling more students to participate in their popular band program.
- **Lane Arts Council:** Fern Ridge area children participated in a local "All About Art" immersive summer camp, which blends an exploration of ecology with diverse experiences in the arts.
- **Rural Art Center:** The Crow-Applegate-Lorane School District depends on the Center to provide after-school multi-cultural art instruction on shortened school days.
- **Veneta Elementary School:** An artist-in-residence taught all students about the science and method behind tie-dyeing; students then created wearable works of art, which they displayed at a "Strolling Art Gallery" during parent-teacher conferences.
- **Wordcrafters:** This collaborative project with Elmira High School provided an arts residency focusing on spoken word writing and performance.

## Leslie Scott Imagine Grant Award

The annual Leslie Scott Imagine Grant Award is recognition given to the endowment-funded project that best represents former Fair General Manager Leslie Scott's contributions to the Fair, which included: providing opportunities for youth; reaching out to our neighbors; and nurturing creativity of all sorts. This year's awardees were Rural Arts Center (Pandemic-impact Funding) and Wordcrafters (Annual Endowment funding).

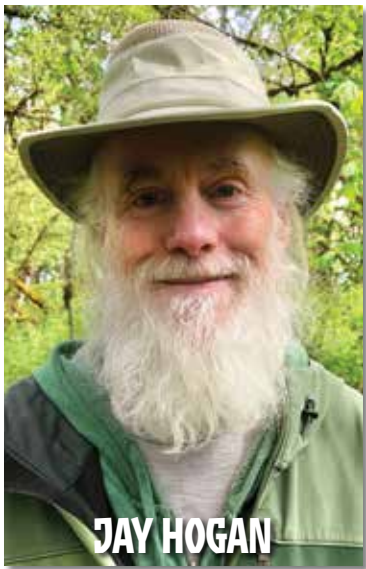
## Board of Directors Donations

Even though the pandemic caused the Fair to be canceled like so many other events, in 2020 the OCF Board of Directors opted to donate \$20,000 out of reserve funds to help meet the extraordinary needs of these times. Three Lane County nonprofits were awarded Special Covid Emergency Relief Grants for basic needs assistance:

- **Downtown Languages** to provide basic needs assistance to Latino families, including food, rent assistance, and online educational resources.
- **Sponsors** to support formerly incarcerated people who are released back to the community with financial assistance for shelter, food, clothing, masks and hygiene products.
- **The Kareng Fund** for artisans who need assistance with food, shelter, utilities, transportation, Covid-related safety precautions, or medical aid.







JAY HOGAN



HANDMADE MOMENTS



BUCKMAN COE



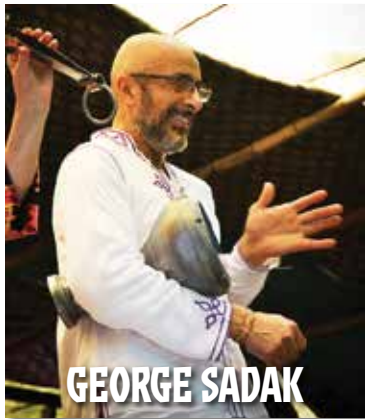
ALCYON MASSIVE



JUGGLEMANIA  
& (CO)DEPENDENTS



MONONEON



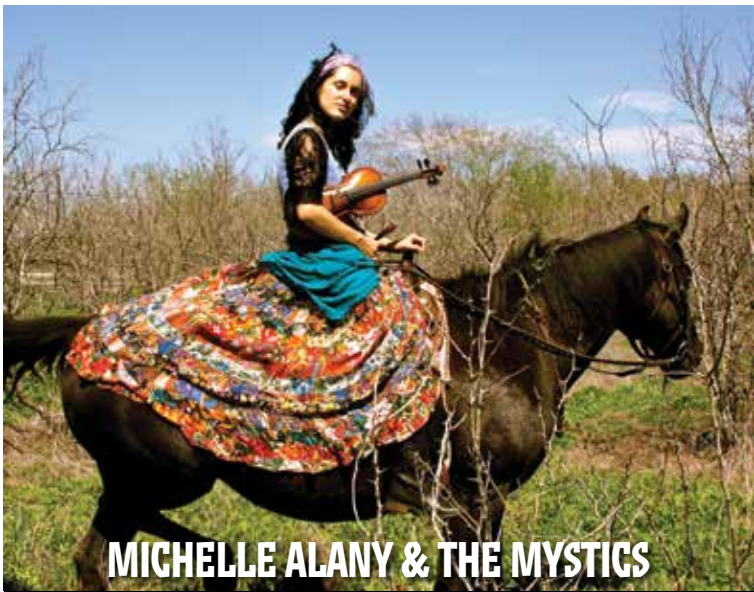
GEORGE SADAK



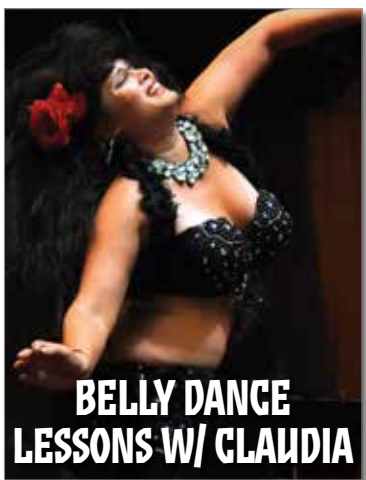
THE WITCHES MUSE  
PODCAST



EVAN GREER



MICHELLE ALANY & THE MYSTICS



BELLY DANCE  
LESSONS W/ CLAUDIA



GRUPO MASATO



TOM NODDY



TRASHCAN JOE

**THE PIT CREW IS**

Dorna Baumann, Jesse Baumann,  
Ben Root, Scott Russell, Sarah-Kate Sharkey,  
Amy Wolfson, Nora Wolfson



FOOBLE  
THE DRAGON



LEAPIN' LOUIE  
GOES TO WAR!



MOONALICE

## FROM THE HEART

As a 501(c)3 non-profit organization, the Fair relies heavily on the abundance of donated time, talent and resources of wonderful volunteers. We would love to be able to thank everyone individually, but given the limits on our space and your time, here are a few individuals and businesses whose contributions over the past year have extended the Fair's capacity to put on an event of the highest quality and develop our year-round programs. Please join us in thanking and supporting them whenever possible: the Board of Directors of OCF; James Bateman for advertising and media assistance; the gang at TicketsWest; the folks at Travel Lane County; the amazing staff at the Long Tom Watershed Council; the Kesey family and The McDonald Theatre; everyone at LTD; the teams from AT&T and T-Mobile; Senator Floyd Prozanski and Dan Whelan of Congressman Peter DeFazio's office for their help with the Shuttered Venue Operators Grant; Kim Hutchinson from JD Fulwiler Insurance; Sara Hummell from Jones and Roth, CPA; Pat Walsh; Sue Howe; Tom Heneghan and his fire trucks; the generous folks at Groundwork Organics and Deck Family Farms; Mountain Rose Herbs; Territorial Seed Company and Tom Verhoeven at Peoria Gardens; Jason Perry and the Honey Buckets crew; all the incredibly helpful staff from Key Bank in Veneta and downtown Eugene; the staff at Banner Bank in Veneta; the fine folks from Bear Comm Communications; Cindy Severson from Jerry's; the staff at Lane Electric; and our dear friend Thom Lanfear. Special thanks to our attorney Amanda Walkup and Michael Gelardi our land use attorney; Members of the Veneta community have worked with us since 1996 to make the event run more smoothly. Thank you to Veneta Mayor Keith Weiss and all the Veneta City Councilors and City Manager Matthew Michel; Andy and Tulsi Strickland and the Dodeca Art Farm for their years of support; The staff from Lane Fire Authority; Lane County Land Management; the Fern Ridge Chamber of Commerce; and last but not never least, all of the volunteers who donate huge amounts of time and expertise to the Fair and who deserve recognition for their extraordinary generosity and commitment. From Culture Jam, to Fair Philanthropy, to our ongoing efforts to steward the Fair's resources and promote the Fair's vision and values in all we do, we are blessed by your generosity and creativity. We couldn't do any of it without each and every one of you! Thank you so, so much.



# Look at the Stars!

JUST A FEW OF THE HUNDREDS OF TALENTED STAGE PERFORMERS FEATURED THROUGHOUT THE FAIR!  
SEE COMPLETE SCHEDULES INSIDE

